



ENVISION
SHAKOPEE
Shaping the Future of our City Together

ENVISION SHAKOPEE

COMMUNITY VISIONING WORKSHOP

SHAKOPEE, MN | OCT 12, 2017

How can we provide the best and most efficient services to our residents and businesses?

How can Shakopee remain economically competitive?

How can we improve the quality of life for all Shakopee residents?





COMPREHENSIVE PLAN

WHAT IS IT?

COMPREHENSIVE PLAN

A VISION OF THE COMMUNITY



“In essence, a comprehensive plan is an **expression of the community’s vision** for the future and a **strategic map** to reach that vision.”

COMPREHENSIVE PLAN

A VISION OF THE COMMUNITY



*It guides the **physical, social, and economic** development, both public and private, of the municipality and its environs.*



COMPREHENSIVE PLAN

BLUEPRINT FOR THE COMMUNITY

“...municipalities are faced with mounting problems in providing means of guiding future development of land so as to insure a **safe**, more **pleasant**, and more **economical** environment...”

Minnesota State Statute 462.351

- Protects & enhances natural resources
- Fosters sustainable economic development
- Protects property rights & values
- Guides land use & development decisions
- Informs public policy
- Aligns public & private investment
- Engages residents in planning for the future



COMPREHENSIVE PLAN

GUIDING PRINCIPLES



VISIONARY



INCLUSIVE



STRATEGIC



TRANSPARENT



COMMUNITY-
ORIENTED



ACCESSIBLE



SYSTEMS-
BASED



ACCOUNTABLE



CONSENSUS-
FOCUSED



ACTION-
ORIENTED



DATA-
DRIVEN

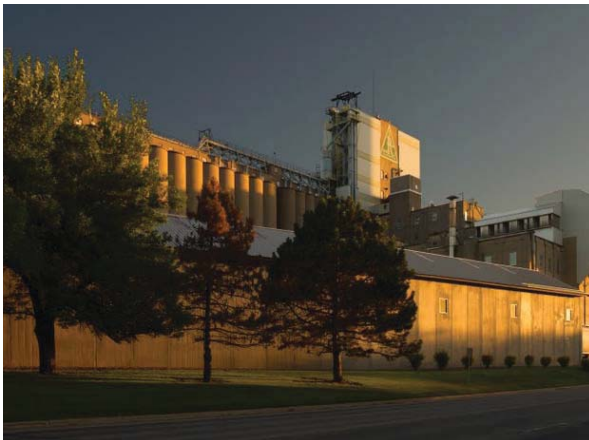
SHAKOPEE STRENGTHS



SHAKOPEE STRENGTHS



SHAKOPEE STRENGTHS



SHAKOPEE STRENGTHS



SHAKOPEE STRENGTHS





SHAKOPEE 2040

AGENDA

COMMUNITY VISIONING WORKSHOP

Meeting Purpose:

Introduce Planning Process, Outline Shakopee Context, & Brainstorm Vision for Shakopee's Future

- 1 What is a Comprehensive Plan
- 2 Plan Process
- 3 Shakopee's History of Growth
- 4 Shakopee Today
- 5 Workshop Stations & Questions





PLAN PROCESS

PLAN PROCESS

TIMELINE



* Website launch

* Community Open House
* Plan Presentation

Planning Commision *

City Council *
Review & Approval

PLAN PROCESS

ACCOMPLISHMENTS TO DATE

- » Project Kick-off Trip (July 2017)
- » Existing Conditions Analysis
 - » Demographic, Employment and Industry Analysis
 - » Community Character Assessment
 - » Transportation Assessment



PLAN PROCESS

INITIAL COMMUNITY ENGAGEMENT

- » Focus Group Interviews
- » EnvisionShakopee.com
- » Community Events
- » DIY Meeting Packets
- » Plan Champion Outreach
- » Community Conversations
- » Social Media



PLAN PROCESS

INITIAL COMMUNITY ENGAGEMENT EMERGING THEMES

- » A Need for Strategic Planning, Decision-making and Communication
- » Growth and Redevelopment
- » Strong and Diverse Economy
- » Shakopee's Unique History and Community Identity
- » Downtown Revitalization
- » Access to Parks, Trails and the River
- » Transportation Options
- » Housing Options



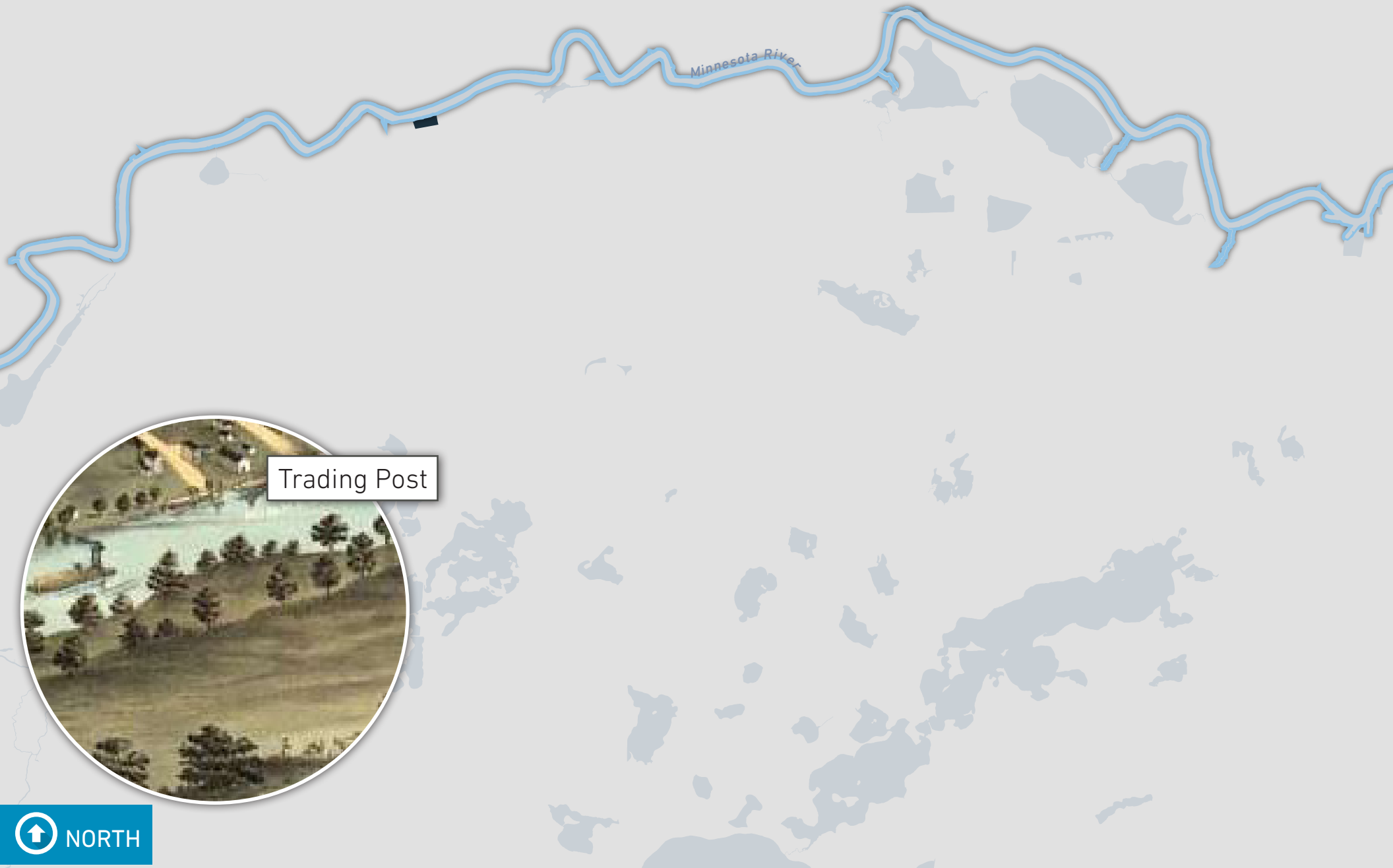


TRENDS & IMPLICATIONS

SHAKOPEE'S HISTORY OF GROWTH

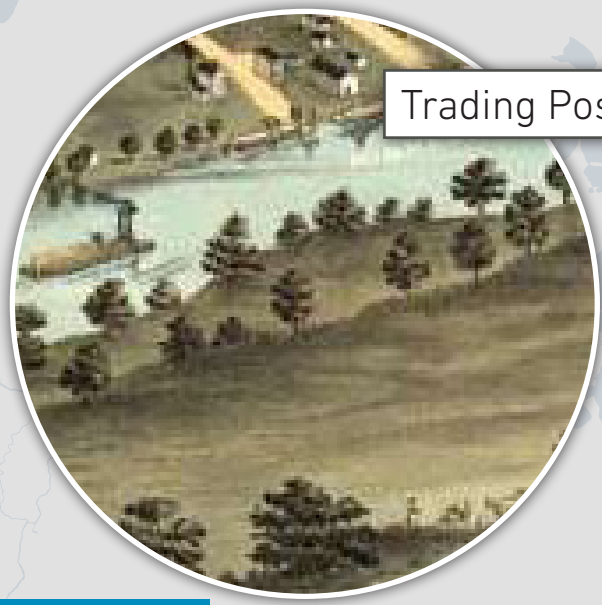
HISTORY OF GROWTH

SHAKOPEE'S RIVERFRONT SETTLEMENT



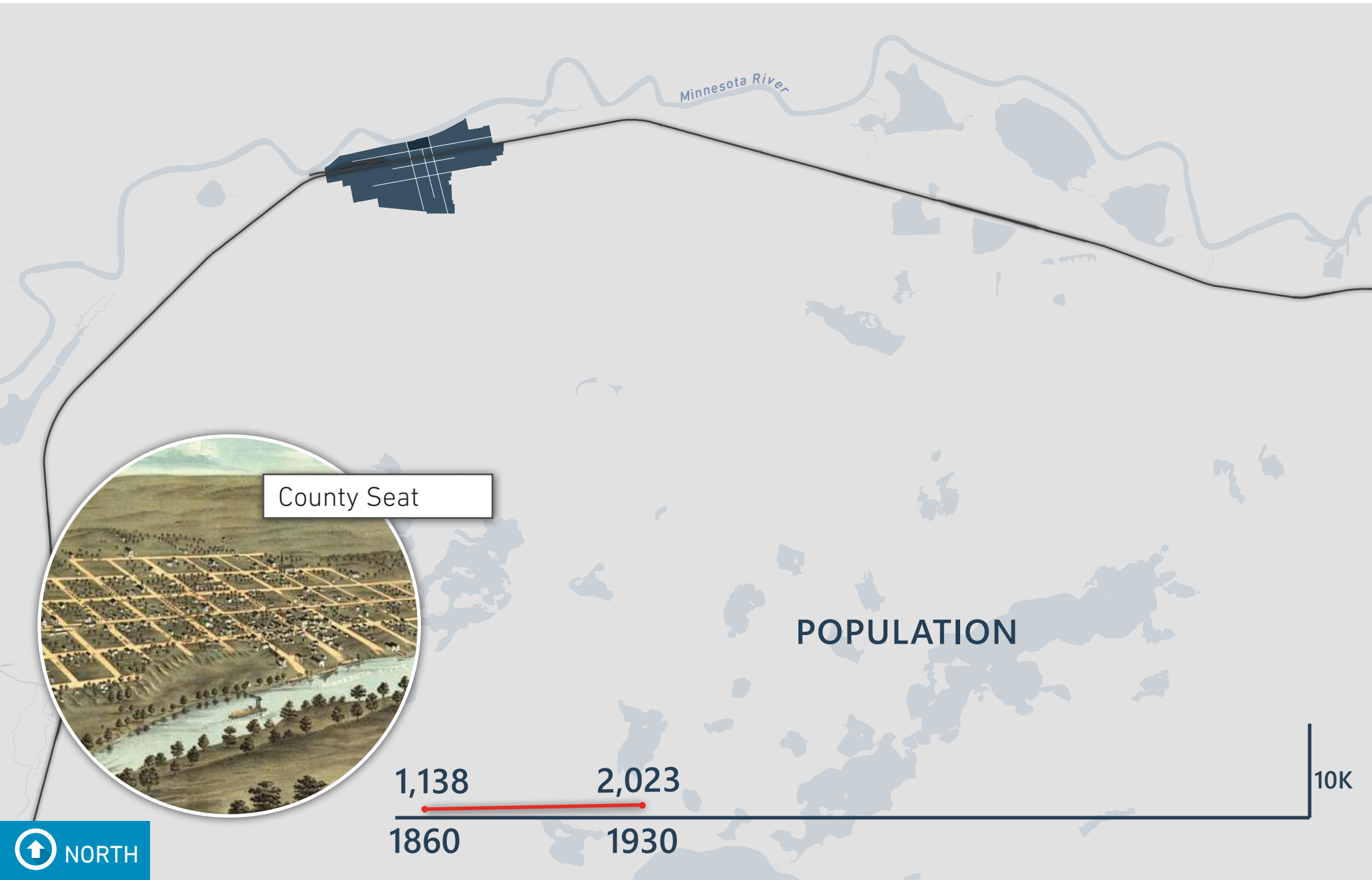
Minnesota River

Trading Post



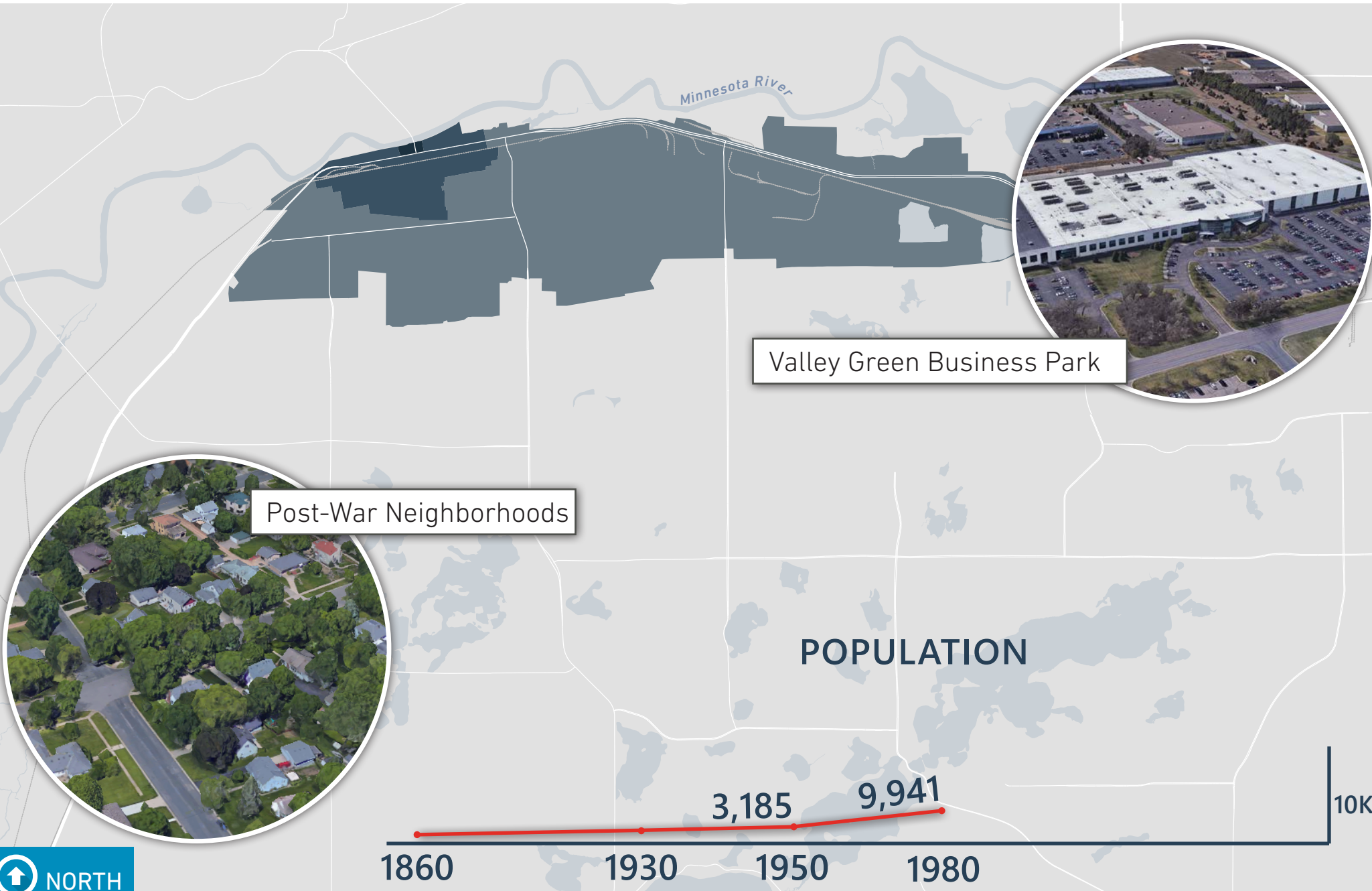
HISTORY OF GROWTH

SHAKOPEE'S ORIGINAL TOWN PLAT



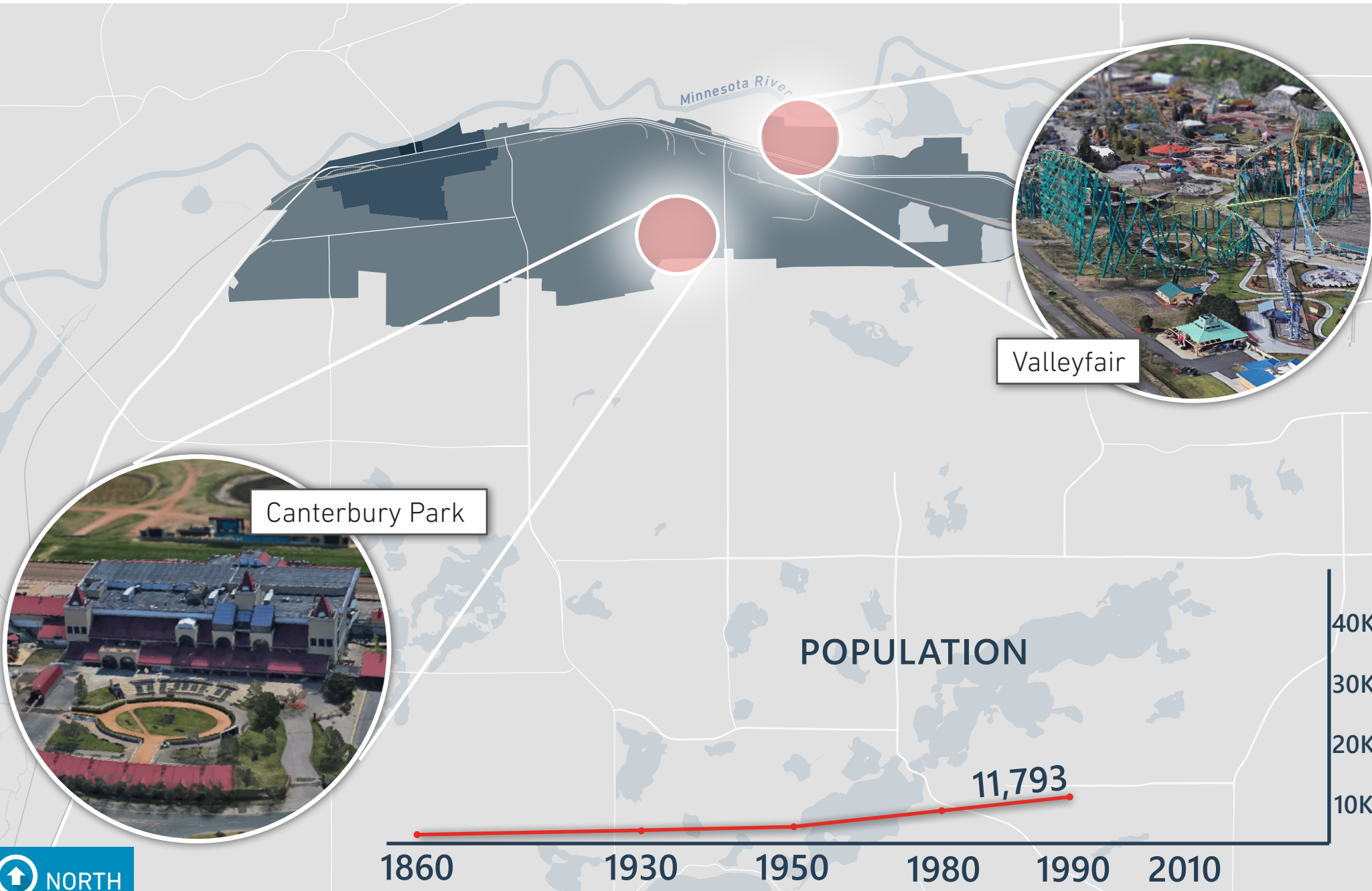
HISTORY OF GROWTH

SHAKOPEE'S POST-WAR GROWTH



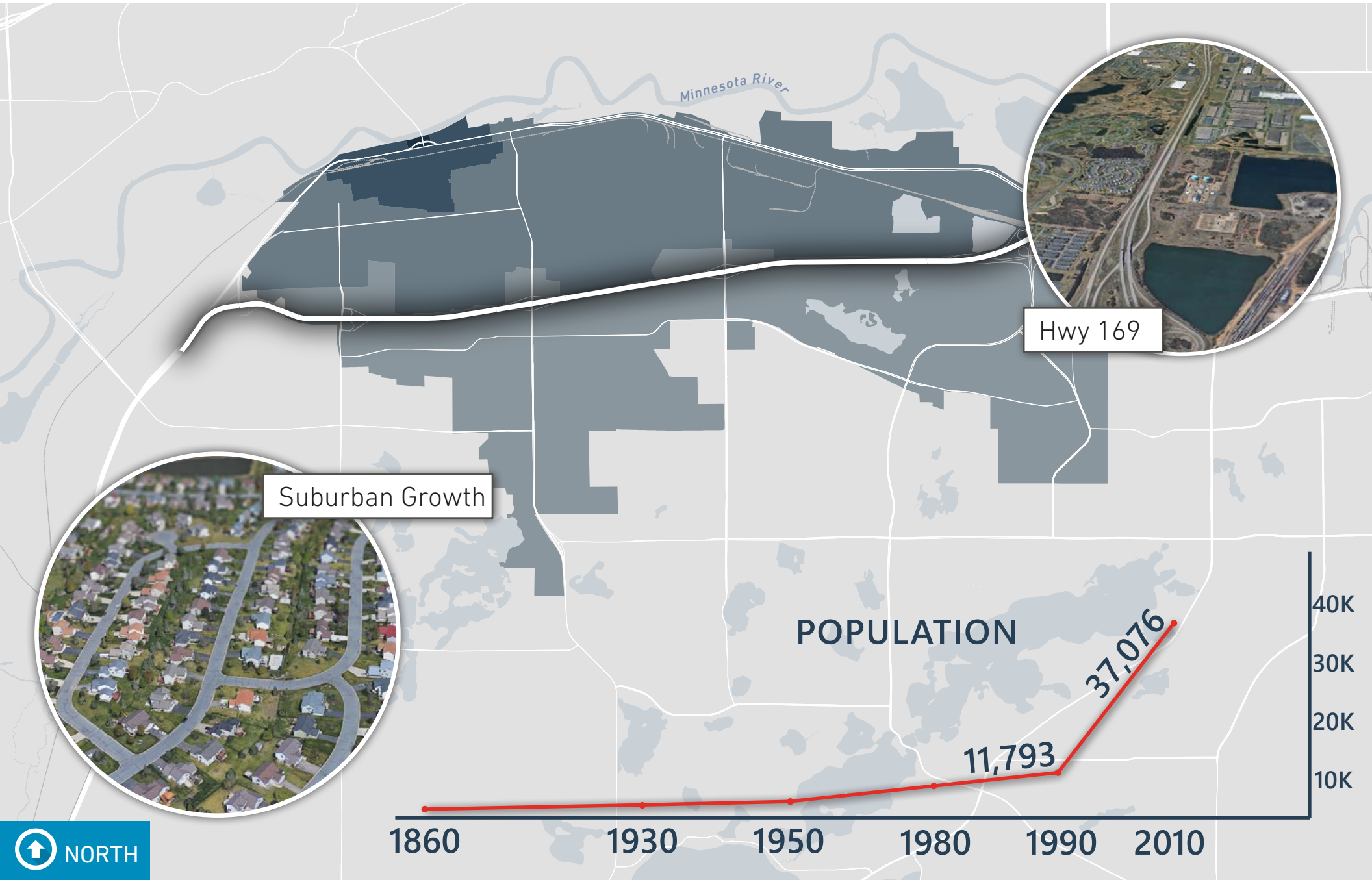
HISTORY OF GROWTH

REGIONAL ENTERTAINMENT DESTINATION



HISTORY OF GROWTH

HWY 169 AND OUTWARD EXPANSION



Suburban Growth

Hwy 169

POPULATION

11,793

37,076

1860

1930

1950

1980

1990

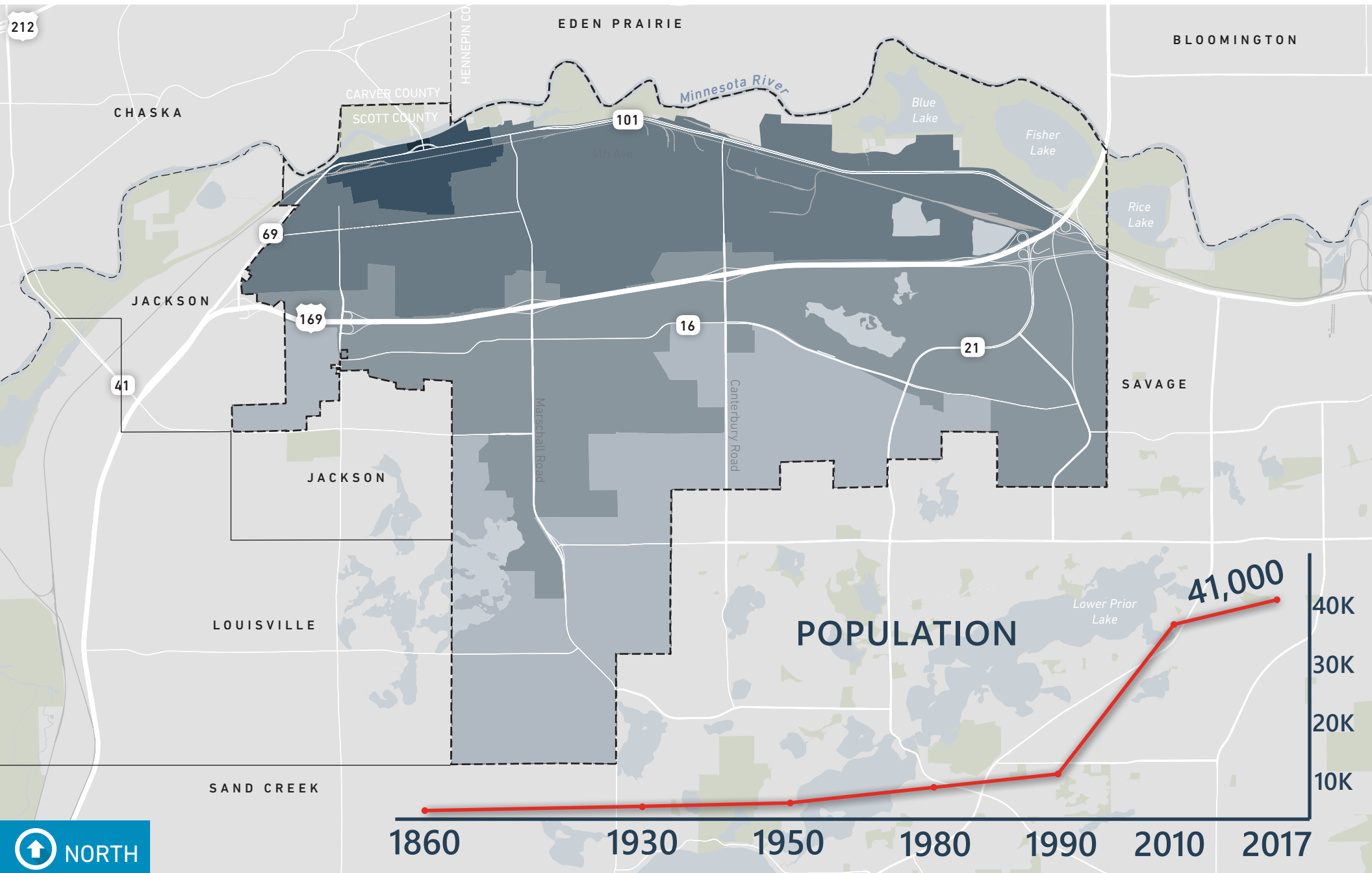
2010

40K
30K
20K
10K



NORTH

SHAKOPEE TODAY





SHAKOPEE TODAY

EXISTING CONDITIONS ANALYSIS

- » Residents & Housing
- » Industries & Employment
- » Transportation & Mobility
- » Assets and & Amenities



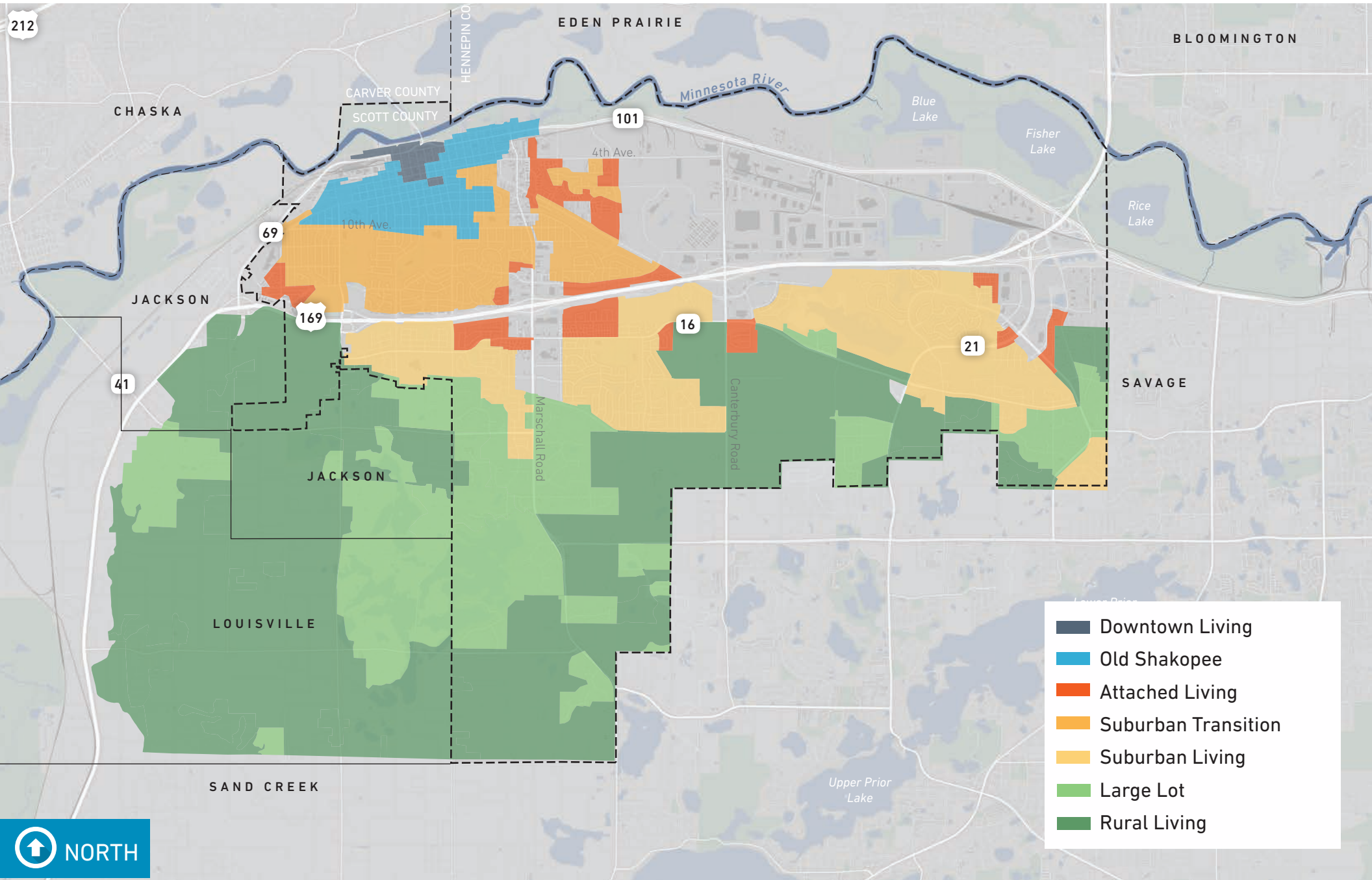
EXISTING CONDITIONS ANALYSIS



RESIDENTS & HOUSING

SHAKOPEE TODAY

RESIDENTS & HOUSING



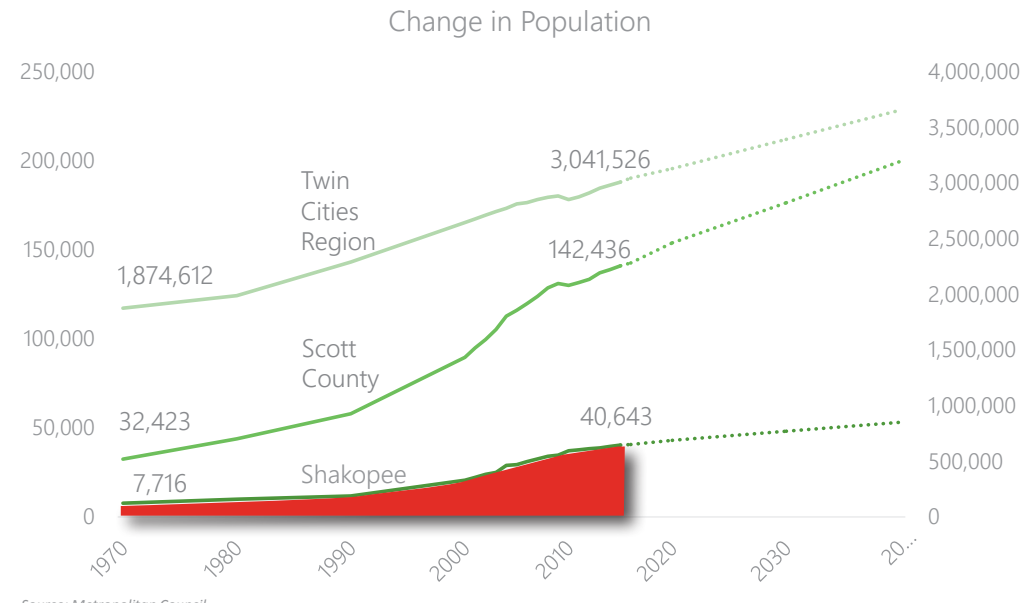
- Downtown Living
- Old Shakopee
- Attached Living
- Suburban Transition
- Suburban Living
- Large Lot
- Rural Living



SHAKOPEE TODAY

RESIDENTS & HOUSING

- » Shakopee has seen rapid growth with approximately 40,000 residents in 2015

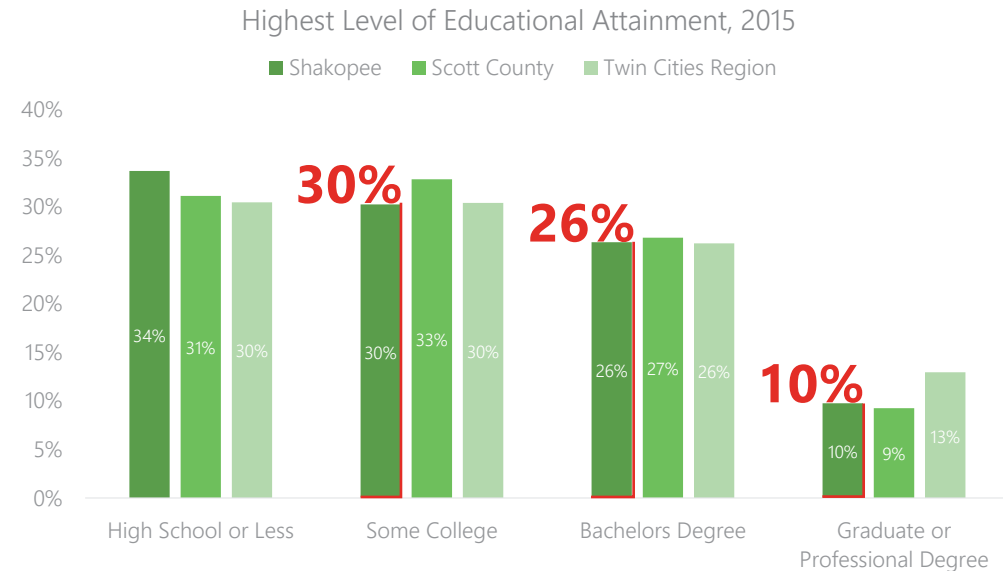


200%
GROWTH SINCE 2000

SHAKOPEE TODAY

RESIDENTS & HOUSING

- » Shakopee has seen rapid growth with approximately 40,000 residents in 2015
- » Residents tend to be
 - Well educated. 66% of adult residents have attended at least some college.

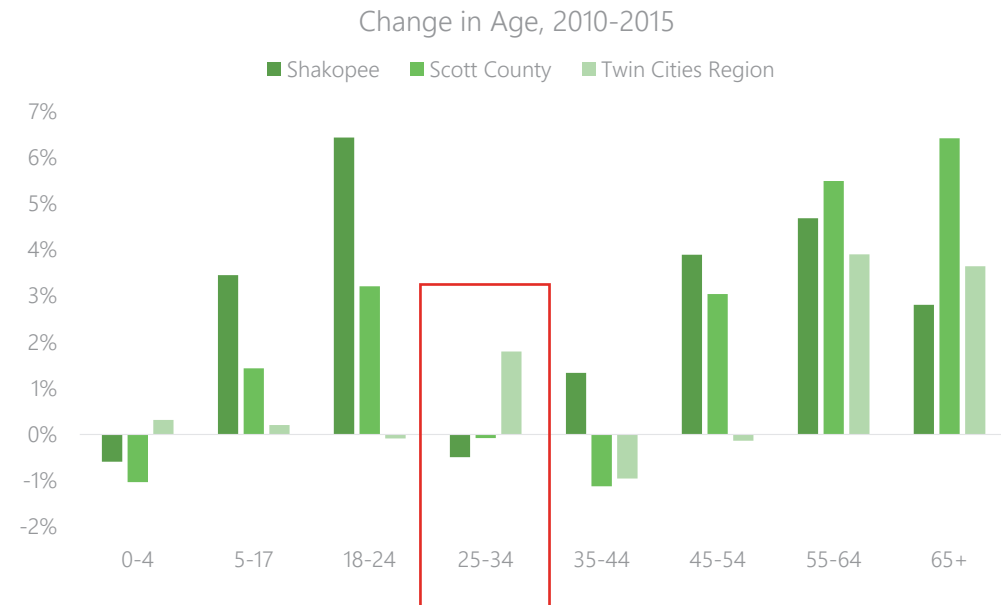


66%
COLLEGE EDUCATION

SHAKOPEE TODAY

RESIDENTS & HOUSING

- » Shakopee has seen rapid growth with approximately 40,000 residents in 2015
- » Residents tend to be
 - Well educated. 66% of adult residents have attended at least some college.
 - Growing older. Millennials (25-34) are not locating in Shakopee, while established families are growing.



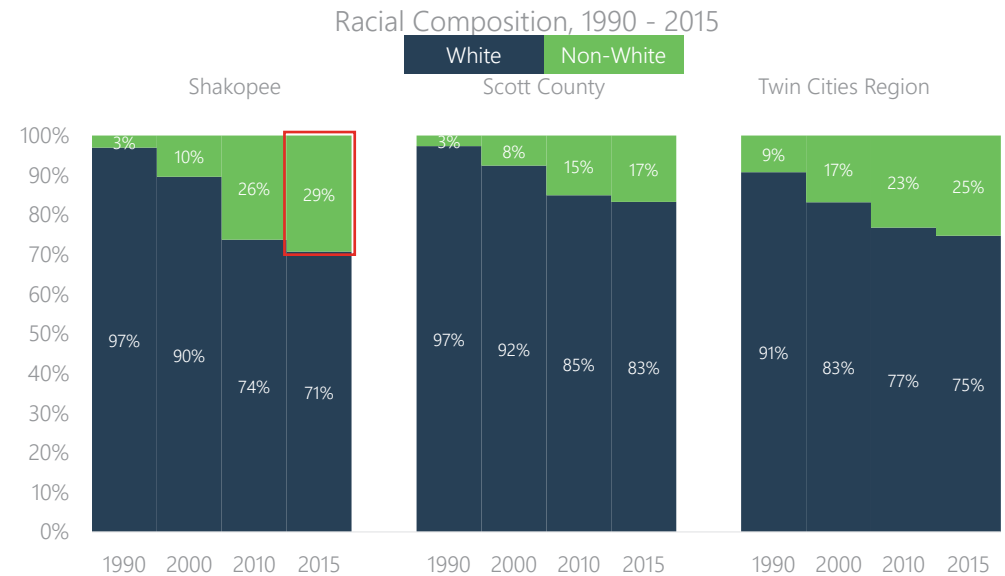
2.5%

FEWER YOUNG ADULTS

SHAKOPEE TODAY

RESIDENTS & HOUSING

- » Shakopee has seen rapid growth with approximately 40,000 residents in 2015
- » Residents tend to be
 - Well educated. 66% of adult residents have attended at least some college.
 - Growing older. Millennials (25-34) are leaving Shakopee, while established families are growing.
 - Becoming more diverse. Nearly 30% of the population in Shakopee are residents of color.

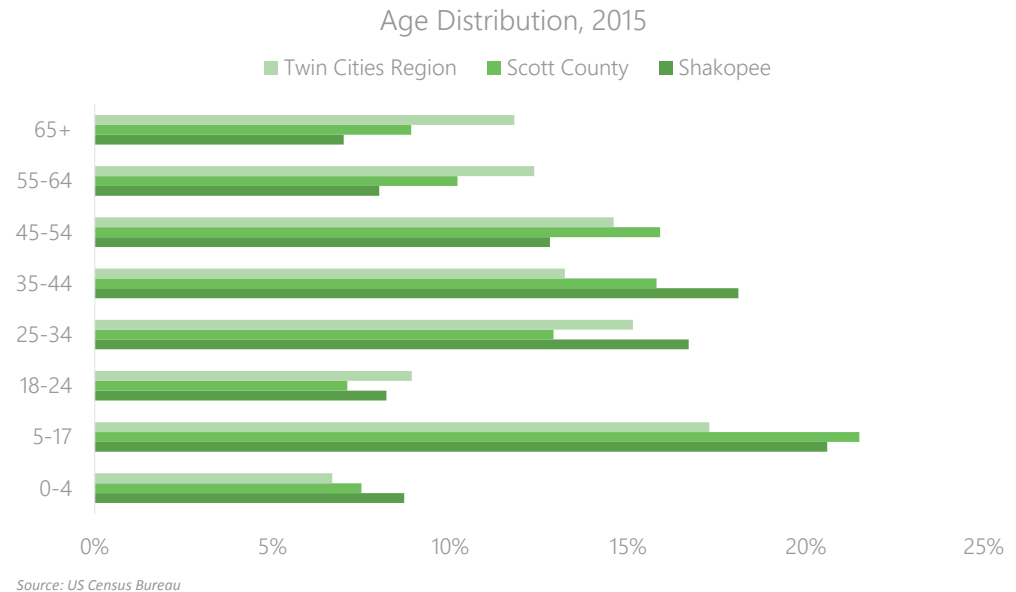


29%
RESIDENTS OF
NON-EUROPEAN
DESCENT

SHAKOPEE TODAY

RESIDENTS & HOUSING

- » Shakopee has seen rapid growth with approximately 40,000 residents in 2015
- » Residents tend to be
 - Well educated. 66% of adult residents have attended at least some college.
 - Growing older. Millennials (25-34) are leaving Shakopee, while established families are growing.
 - Becoming more diverse. Nearly 30% of the population in Shakopee are residents of color.
 - Families with children. Household size in Shakopee is 2.83, which is higher than the region average of 2.5.

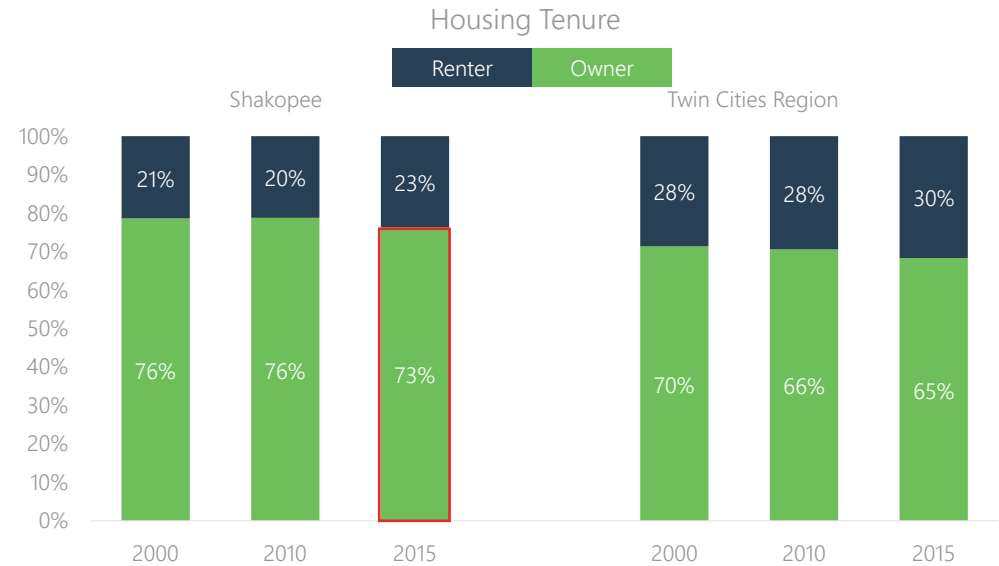


2.83
PEOPLE PER HOUSEHOLD

SHAKOPEE TODAY

RESIDENTS & HOUSING

» Most Residents are homeowners



Source: U.S. Census Bureau

73%
HOME OWNERSHIP

SHAKOPEE TODAY

RESIDENTS & HOUSING

- » Most residents are homeowners
- » Rents are rising and few rental opportunities are arriving on the market



Source: CoStar and Marcus & Millichap

Submarket	Vacancy	Asking Rent
Shakopee	2.9%	\$1.14
Southwest	3.7%	\$1.20
East	2.9%	\$1.10
Southeast	2.7%	\$1.10
North	2.1%	\$1.00
West	3.4%	\$1.20
Minneapolis (Non-Downtown)	2.9%	\$1.50
St. Paul (Non-Downtown)	3.1%	\$1.20

15%

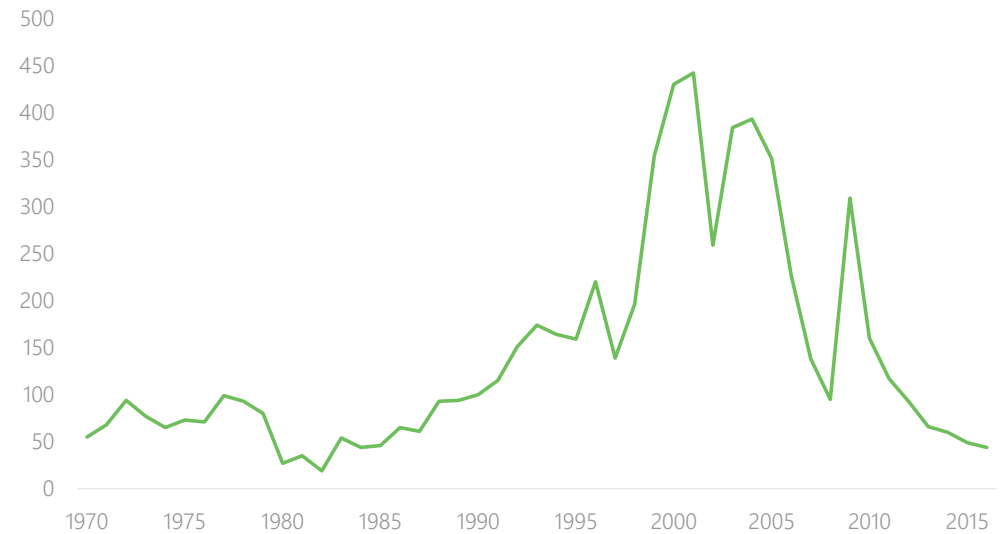
RISE IN AVERAGE RENT SINCE 2010

SHAKOPEE TODAY

RESIDENTS & HOUSING

- » Most residents are homeowners
- » Rents are rising and few rental opportunities are arriving on the market
- » Fewer homes are being constructed

Shakopee Single Family Building Permits



Source: Metropolitan Council

<100

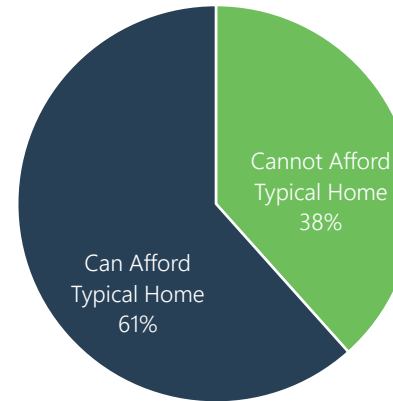
PERMITS TO BUILD NEW HOMES

SHAKOPEE TODAY

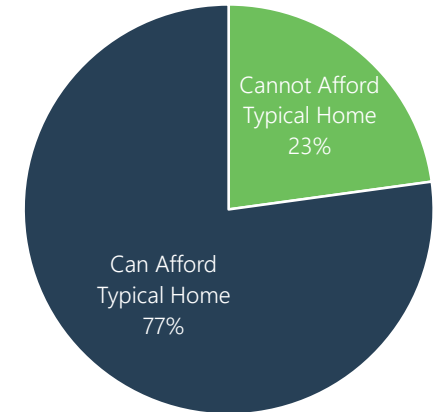
RESIDENTS & HOUSING

- » Most residents are homeowners
- » Rents are rising and few rental opportunities are arriving on the market
- » Fewer homes are being constructed
- » Affordability analysis demonstrates that 35% of Shakopee households cannot afford typical housing

Shakopee Affordability of Home Ownership



Shakopee Affordability of Rentals



35%*

CANNOT AFFORD TYPICAL HOUSING

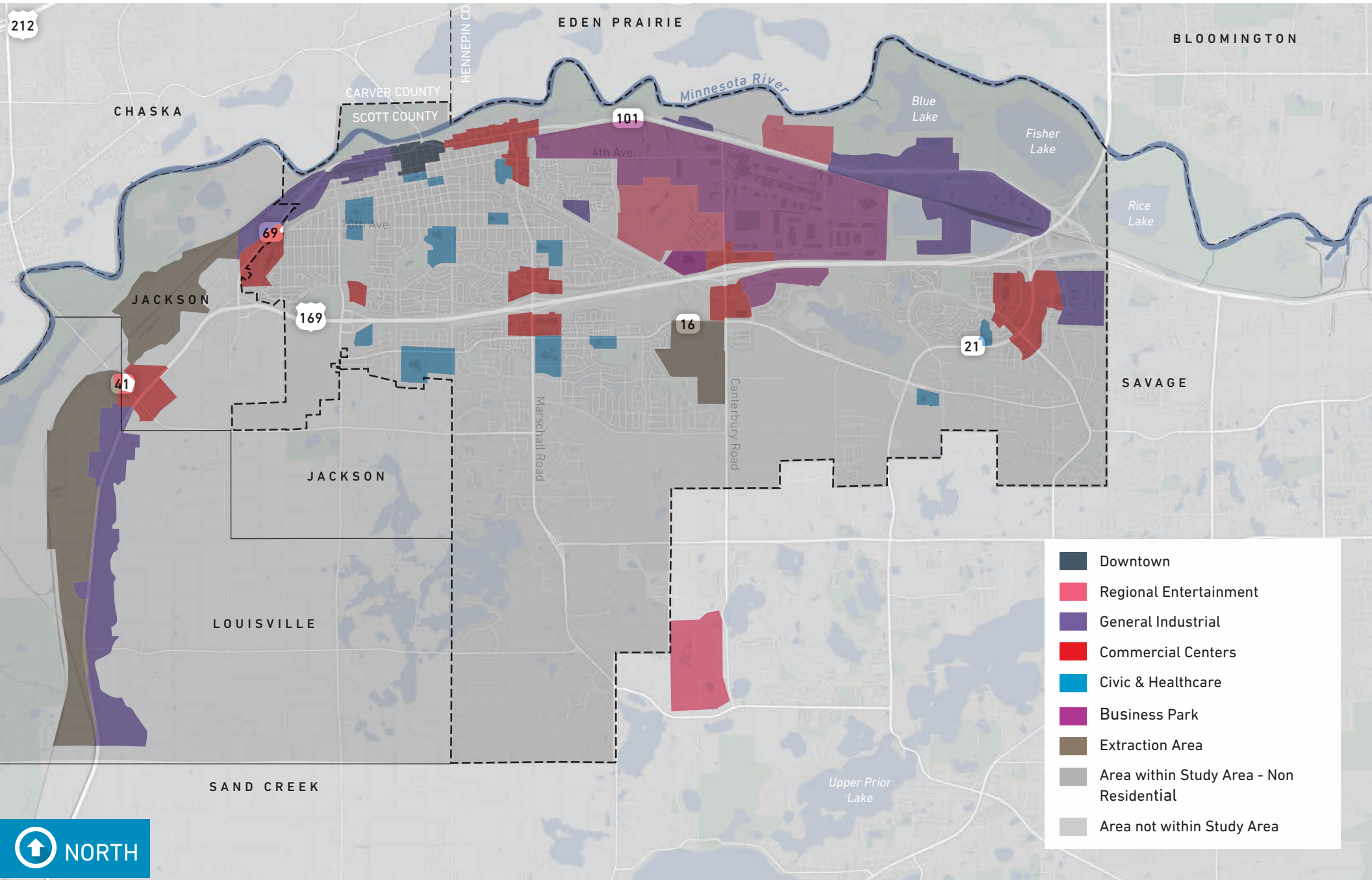
*Note: Affordability includes households that would spend less than 30% of income on housing costs. As a standard established by HUD and used as underwriting criteria by lenders, the 30% threshold is an indicator of affordable housing and market health. Additional expenses, including student debt and child care, make it more difficult for a household to save for a down payment, adding further barriers to home ownership not reflected in the 30% standard.



INDUSTRIES & EMPLOYMENT

SHAKOPEE TODAY

INDUSTRIES & EMPLOYMENT



- Downtown
- Regional Entertainment
- General Industrial
- Commercial Centers
- Civic & Healthcare
- Business Park
- Extraction Area
- Area within Study Area - Non Residential
- Area not within Study Area



SHAKOPEE TODAY

INDUSTRIES & EMPLOYMENT

» Concentrated in manufacturing

22%

MANUFACTURING

SHAKOPEE TODAY

INDUSTRIES & EMPLOYMENT

- » Concentrated in manufacturing
- » Major industries:
 - Manufacturing
 - Health care
 - Retail
 - Wholesale
 - Public Administration
- » The regional economy is more diverse
 - Larger health care sector
 - Educational services sector
 - Food service sector

22%

MANUFACTURING

13%

HEALTH CARE

11%

RETAIL

9%

WHOLESALE

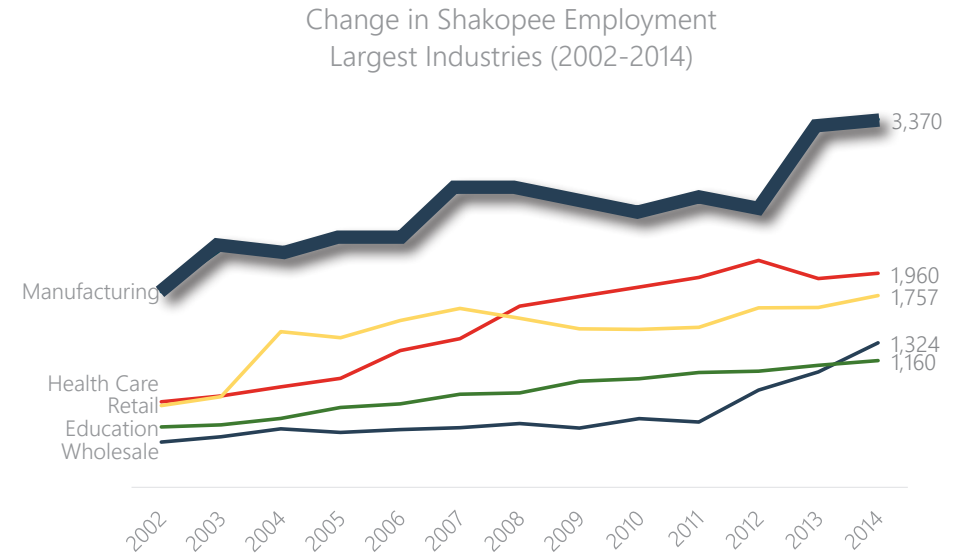
8%

PUBLIC ADMIN

SHAKOPEE TODAY

INDUSTRIES & EMPLOYMENT

- » Manufacturing has seen rapid growth



Source: LEHD

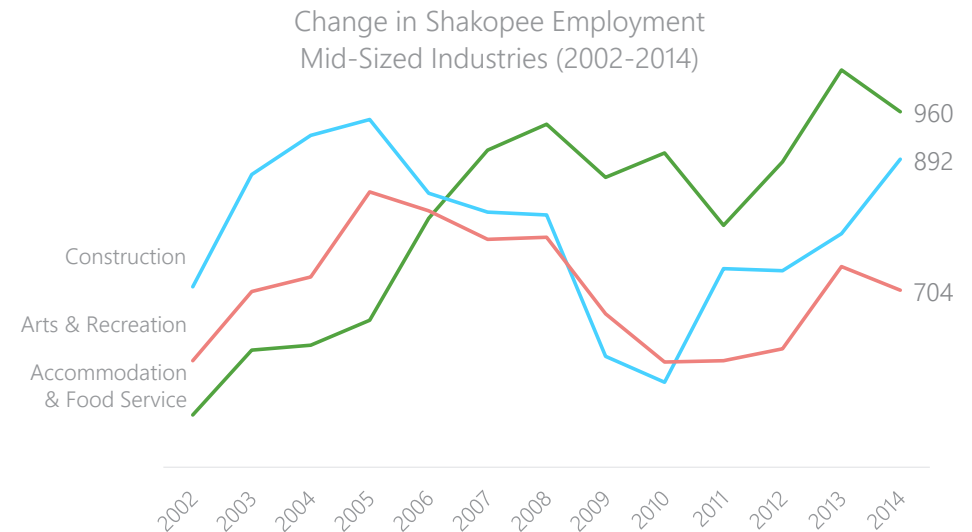
88%

GROWTH IN MANUFACTURING
JOBS SINCE 2002

SHAKOPEE TODAY

INDUSTRIES & EMPLOYMENT

- » Manufacturing has seen rapid growth
- » Smaller industries were impacted by the recession but are recovering. These include:
 - Construction
 - Arts & Recreation
 - Accommodation & Food Service



Source: LEHD

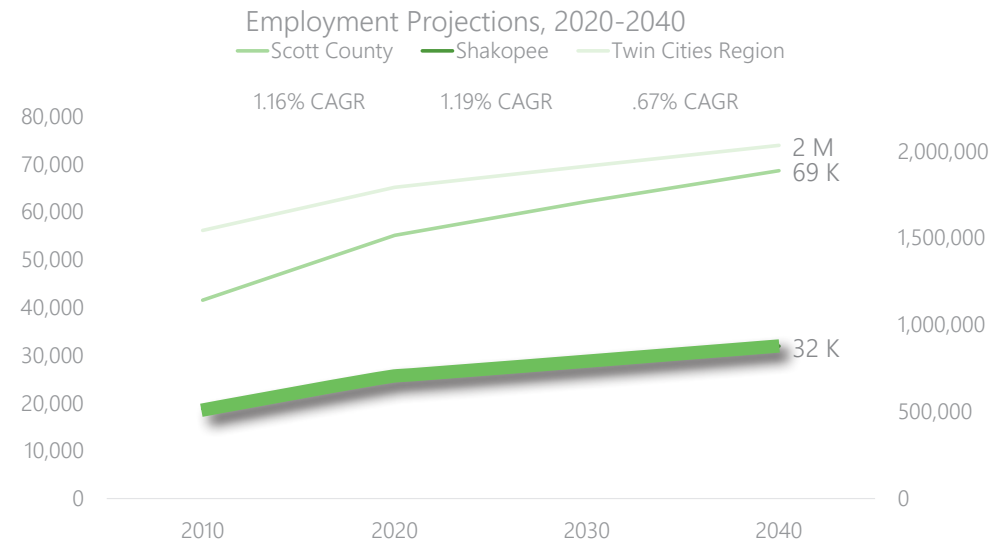
75%

GROWTH IN ACCOMMODATION +
FOOD SERVICE JOBS SINCE 2002

SHAKOPEE TODAY

INDUSTRIES & EMPLOYMENT

- » Manufacturing has seen rapid growth
- » Smaller industries were impacted by the recession but are recovering. These include:
 - Construction
 - Arts & Recreation
 - Accommodation & Food Service
- » Employment is projected to grow at a faster rate than both the county and the region



Source: Metropolitan Council

32K

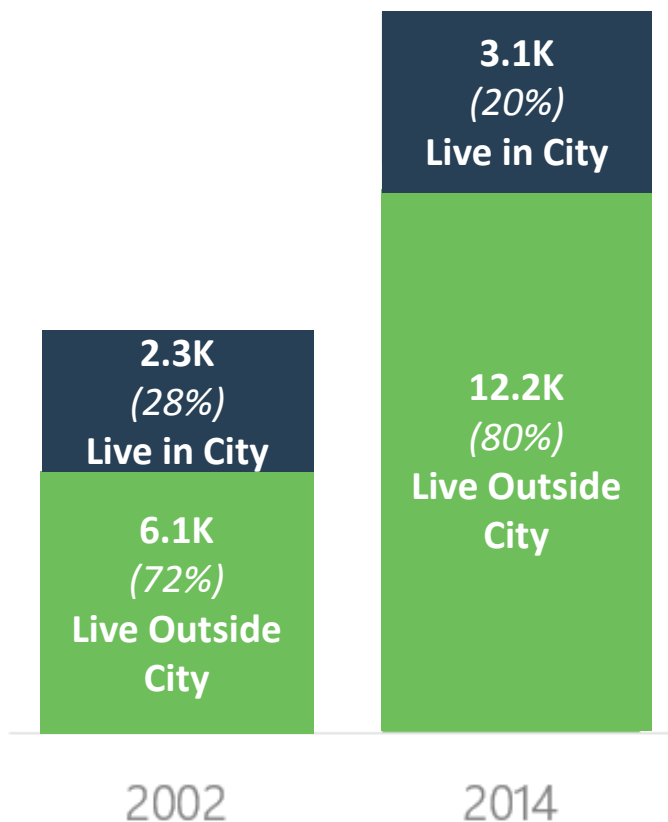
EMPLOYEES EXPECTED BY 2040

SHAKOPEE TODAY

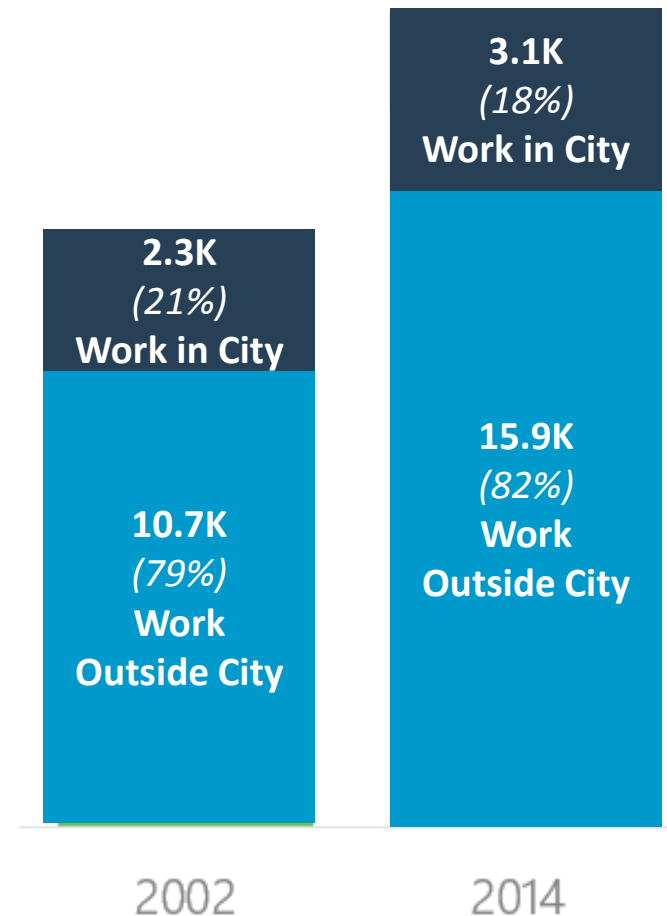
INDUSTRIES & EMPLOYMENT

- » The majority of residents work outside of Shakopee and the majority of Shakopee employees live outside the city. This trend increased significantly from 2002 –2014.

Shakopee Employees



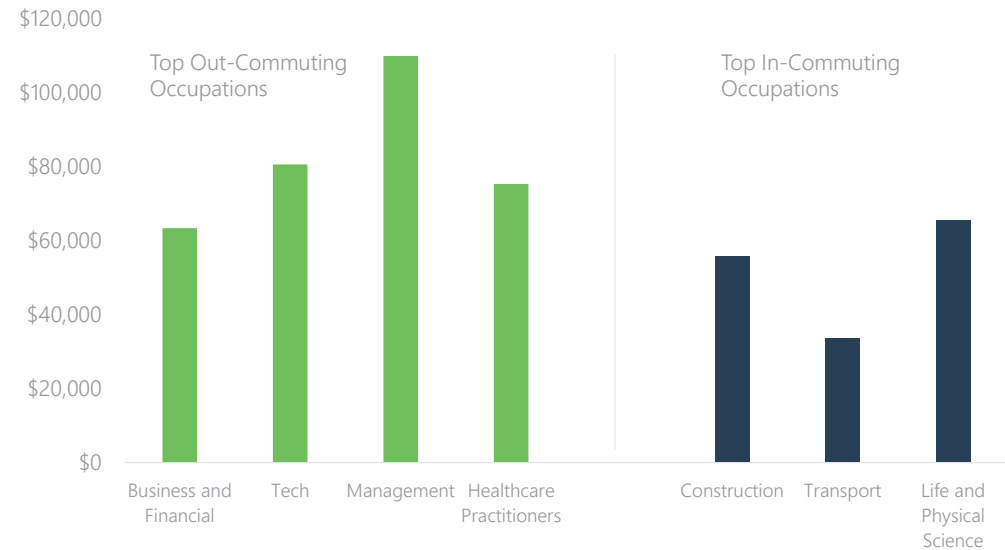
Shakopee Residents



SHAKOPEE TODAY

INDUSTRIES & EMPLOYMENT

- » Residents who work outside the city earn higher wages than employees in Shakopee
- » Workers who commute into the city earn lower wages and are in occupations that require less education and fewer qualifications.



Source: EMSI

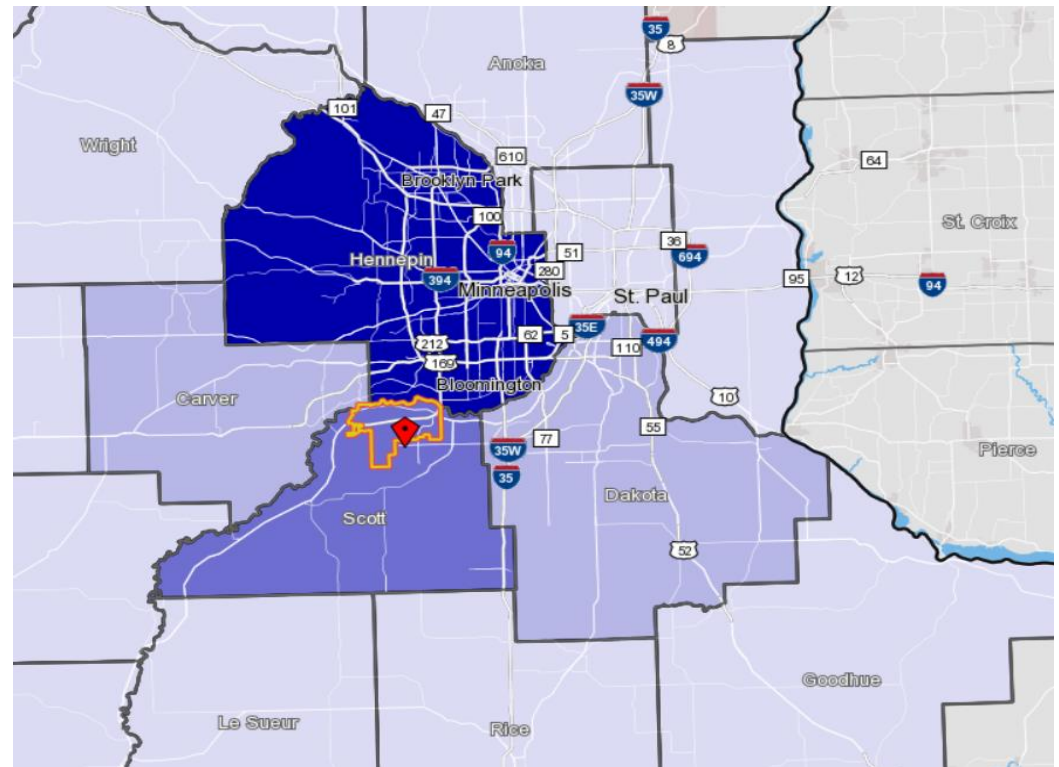
\$60K+
AVERAGE EARNINGS OF TOP
OUT-COMMUTING OCCUPATIONS

SHAKOPEE TODAY

INDUSTRIES & EMPLOYMENT

- » Nearly half of Shakopee residents commute to Hennepin County where there are more high paying jobs.
- » 25% of Shakopee residents remain in Scott County to work.

Top Out-Commuting Destinations	Net Commuters, 2014
Shakopee (no commute)	17%
Bloomington	8.8%
Eden Prairie	8.5%
Minneapolis	8.1%
Minnetonka	3.9%
Prior Lake	3.9%

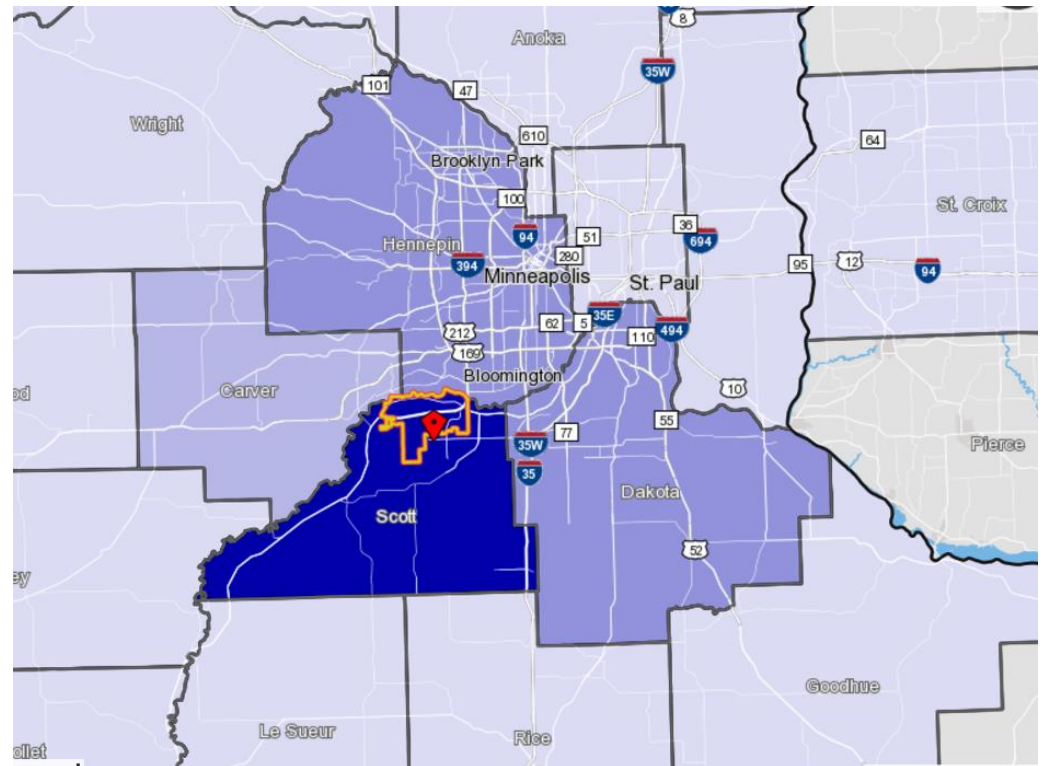


SHAKOPEE TODAY

INDUSTRIES & EMPLOYMENT

- » Many workers commute into Shakopee from elsewhere in Scott County and around the region.

Top In-Commuting Origins	Net Commuters, 2014
Shakopee (no commute)	22%
Rest of Scott County	21%
Burnsville	4.2%
Bloomington	3.5%
Chaska	3.1%
Minneapolis	3%



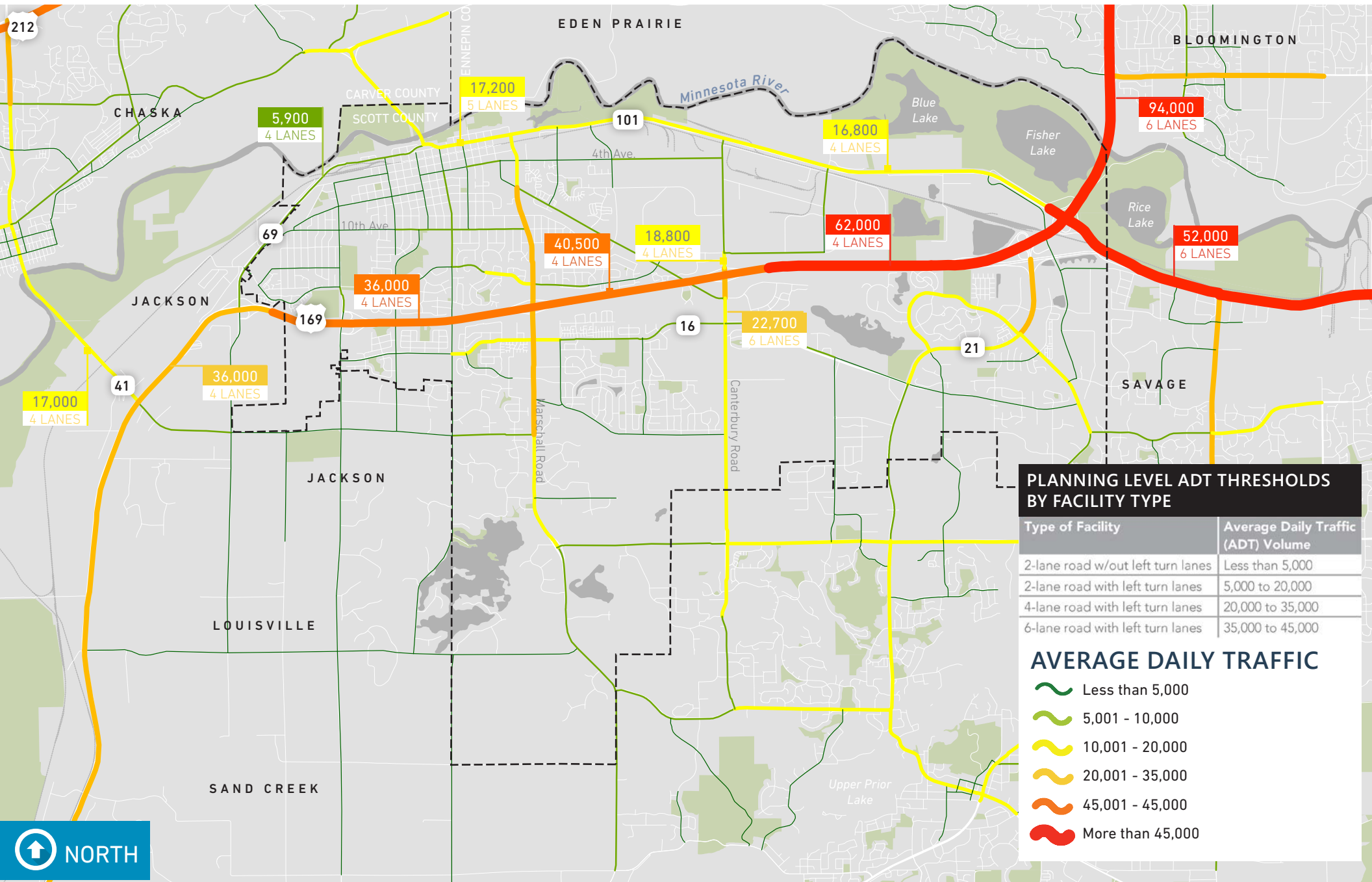


TRANSPORTATION & MOBILITY

SHAKOPEE TODAY

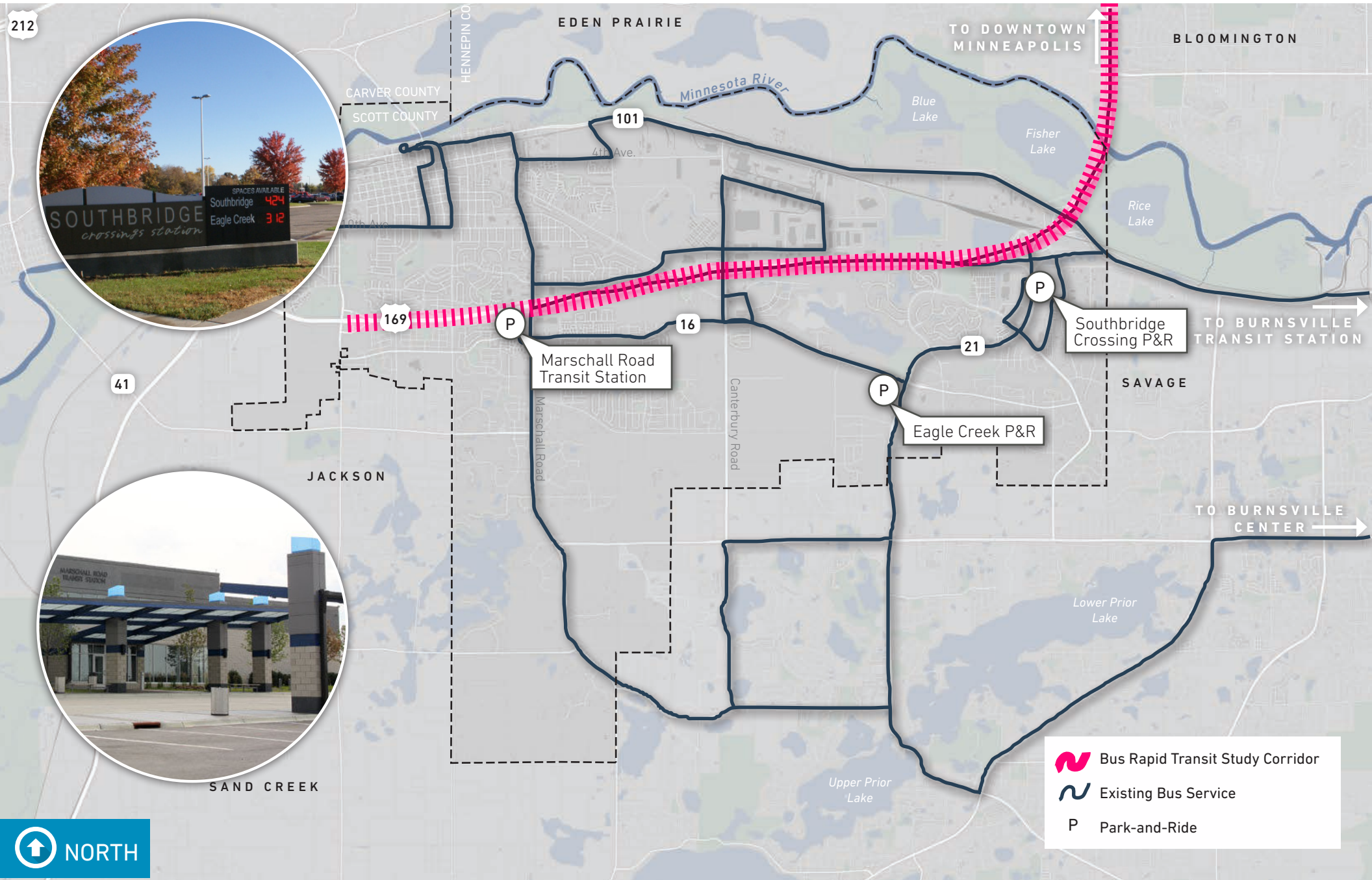


TRANSPORTATION & MOBILITY - AVERAGE DAILY TRAFFIC



SHAKOPEE TODAY

TRANSPORTATION & MOBILITY - TRANSIT

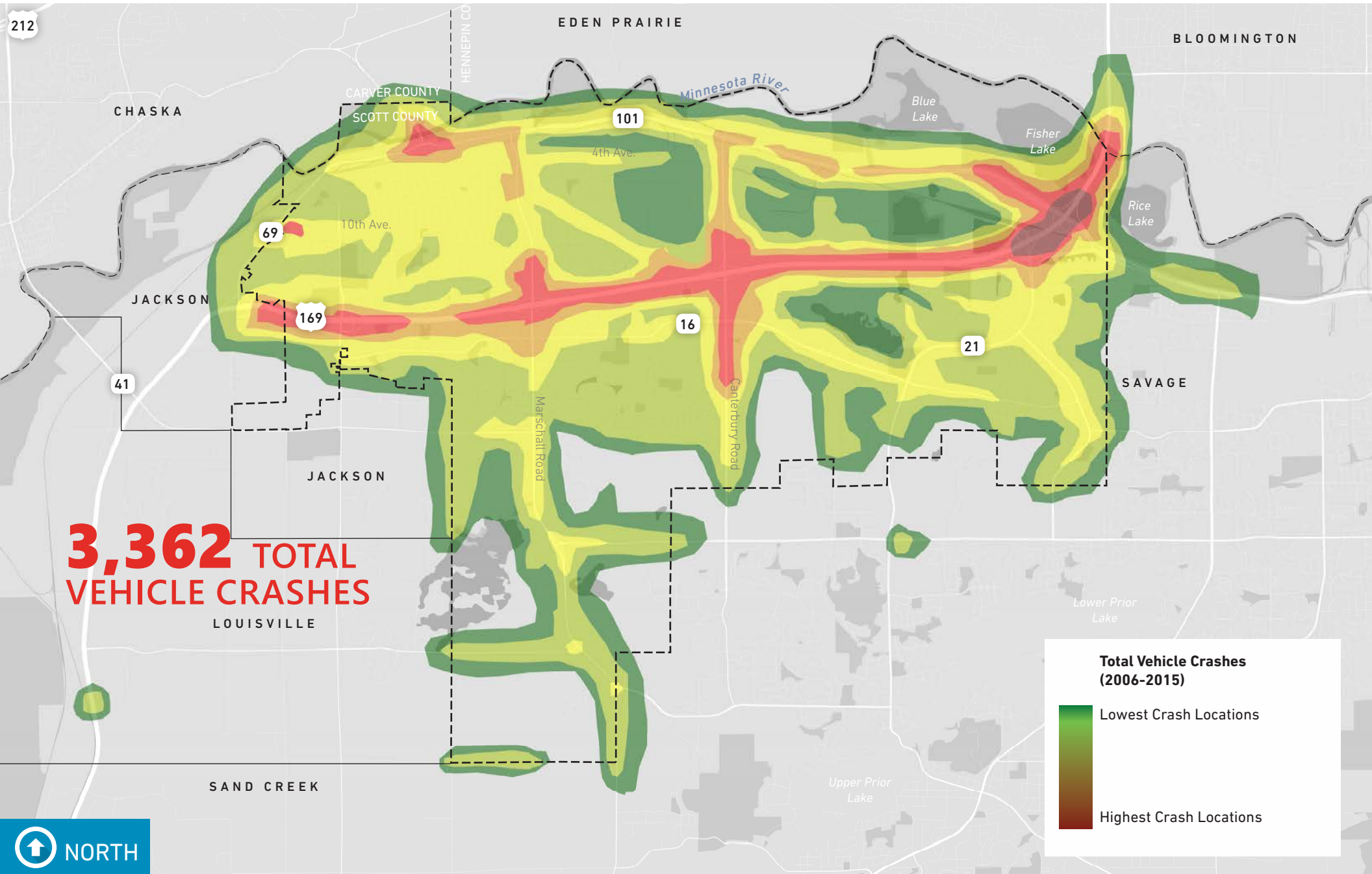


- Bus Rapid Transit Study Corridor
- Existing Bus Service
- Park-and-Ride



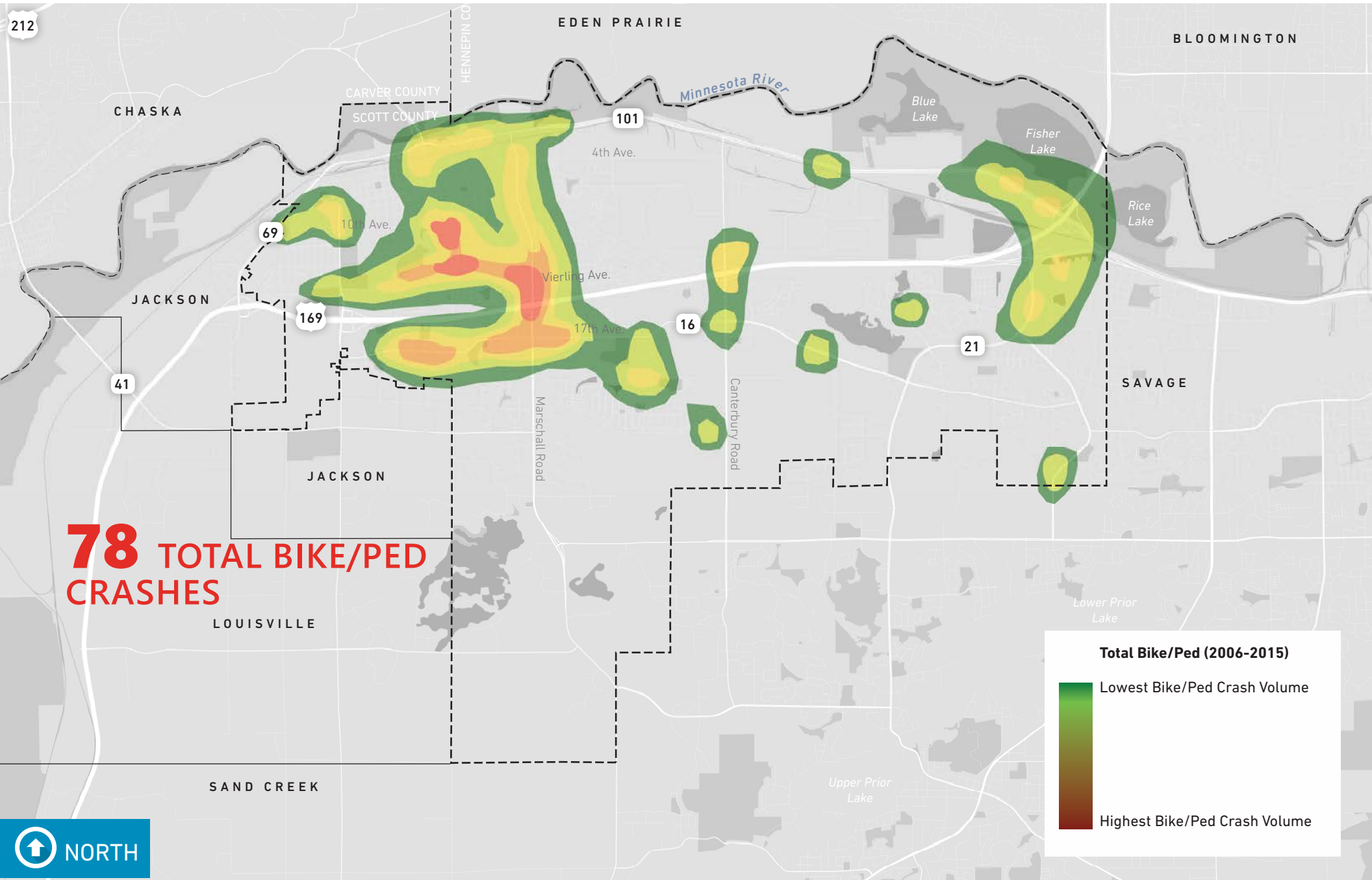
SHAKOPEE TODAY

TRANSPORTATION & MOBILITY - VEHICLE CRASHES



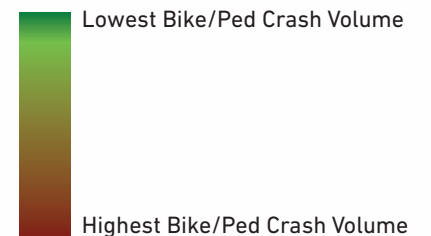
SHAKOPEE TODAY

TRANSPORTATION & MOBILITY - BIKE/PED INVOLVED CRASHES



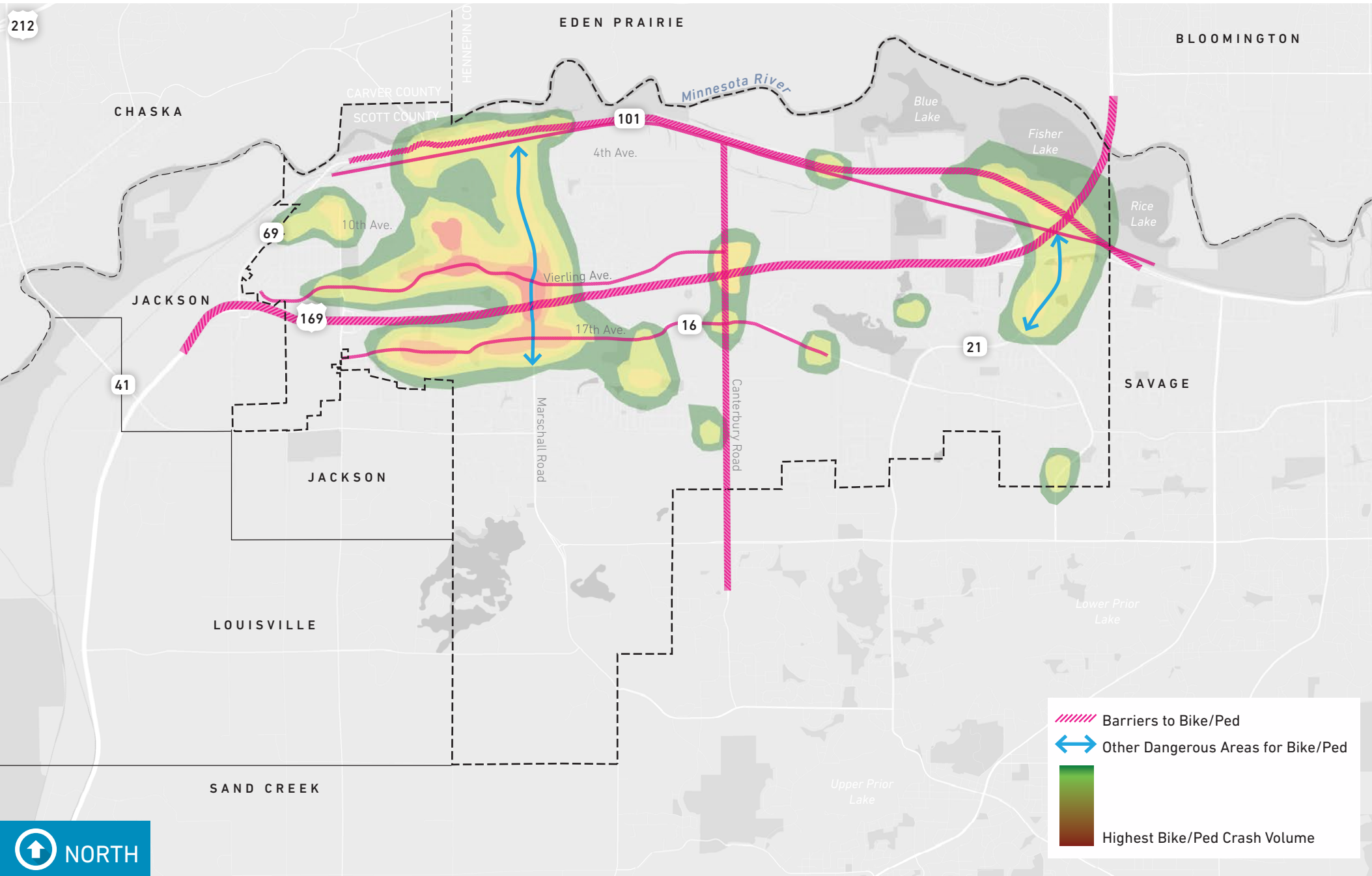
78 TOTAL BIKE/PED CRASHES

Total Bike/Ped (2006-2015)



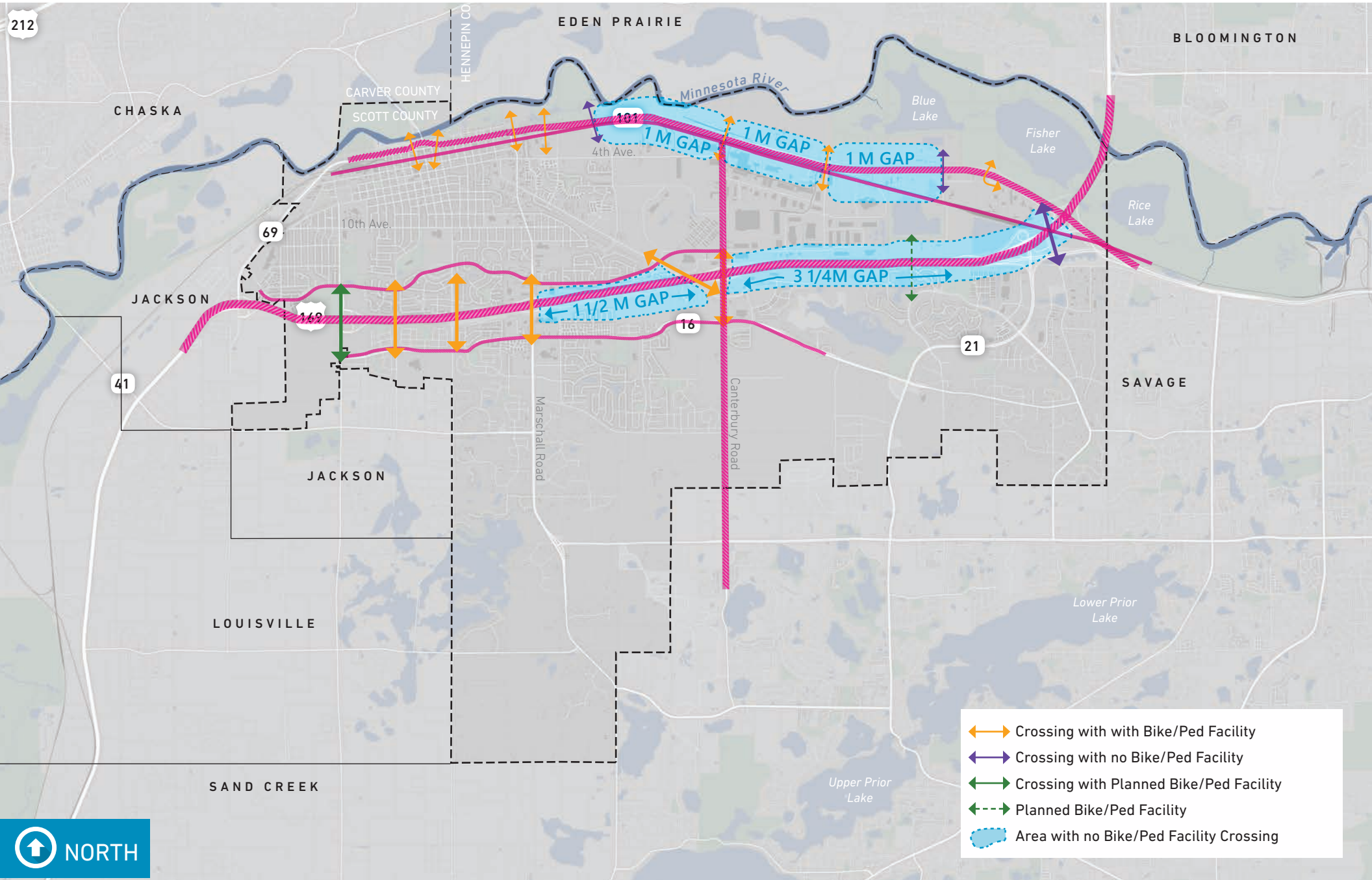
SHAKOPEE TODAY

TRANSPORTATION & MOBILITY - BIKE/PED BARRIERS



SHAKOPEE TODAY

TRANSPORTATION & MOBILITY - CONNECTIONS + GAPS

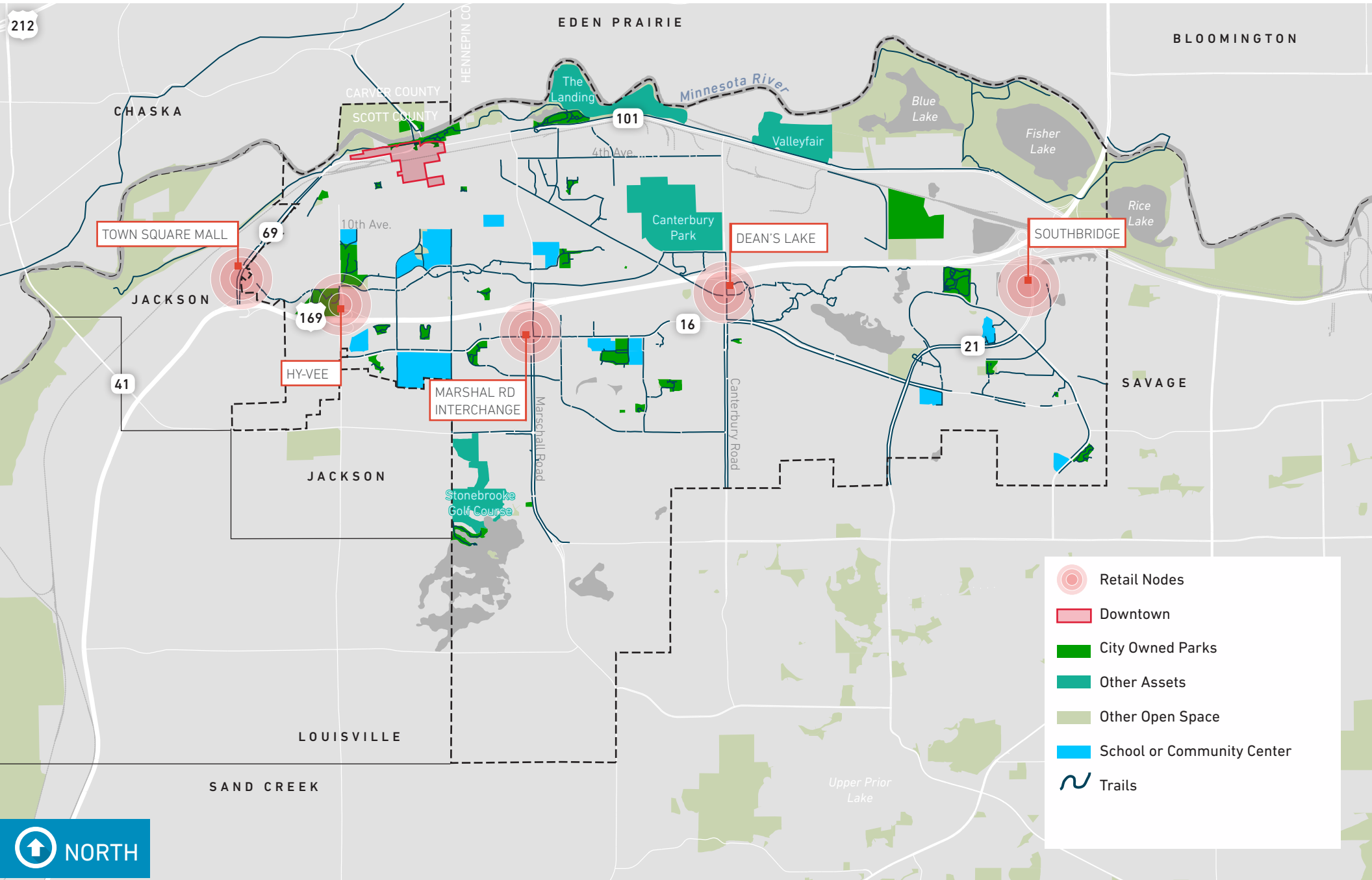




ASSETS & AMENITIES

SHAKOPEE TODAY

ASSETS & AMENITIES

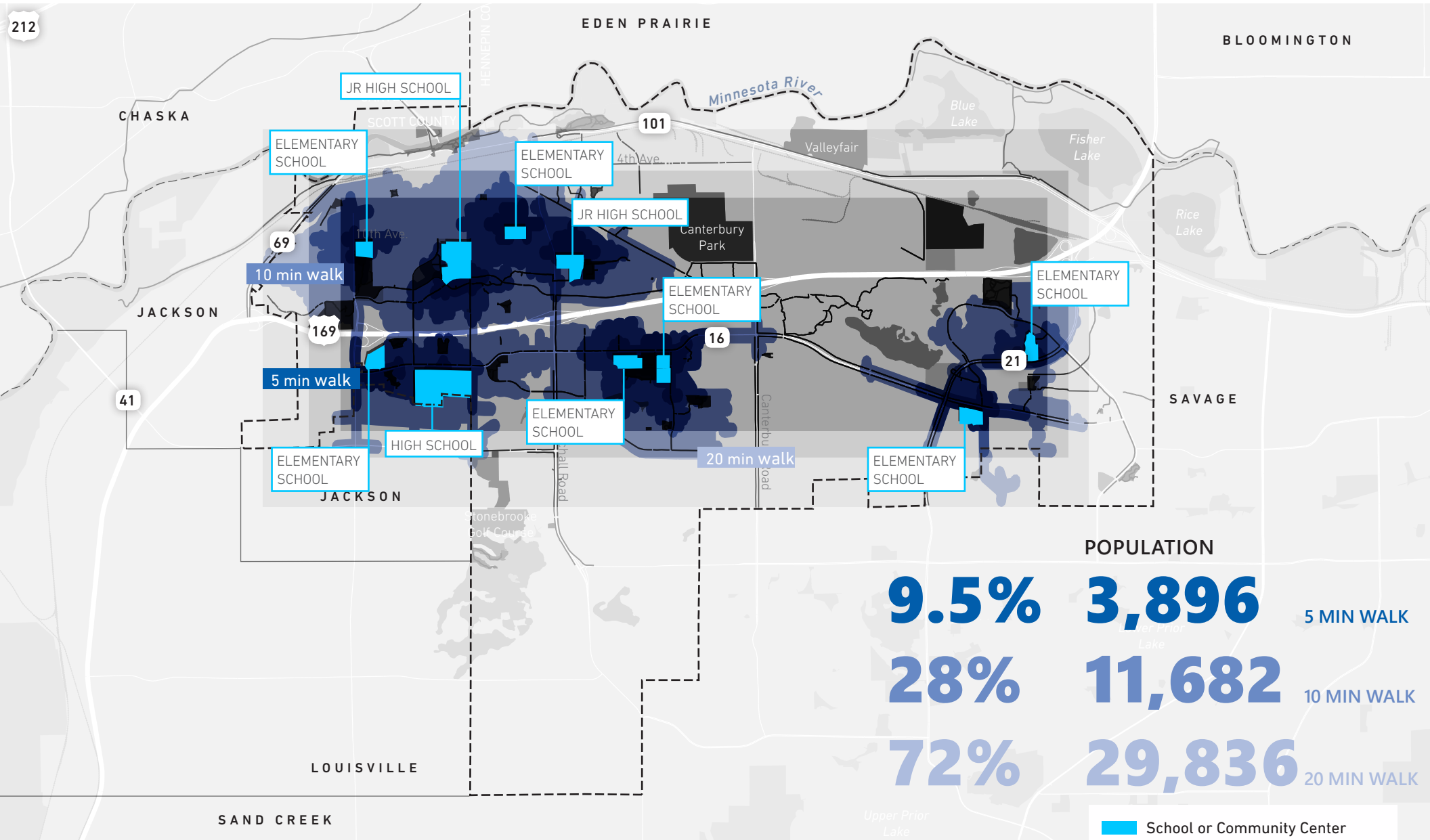


- Retail Nodes
- Downtown
- City Owned Parks
- Other Assets
- Other Open Space
- School or Community Center
- Trails



SHAKOPEE TODAY

SCHOOLS WALKSHED



POPULATION

9.5%	3,896	5 MIN WALK
28%	11,682	10 MIN WALK
72%	29,836	20 MIN WALK

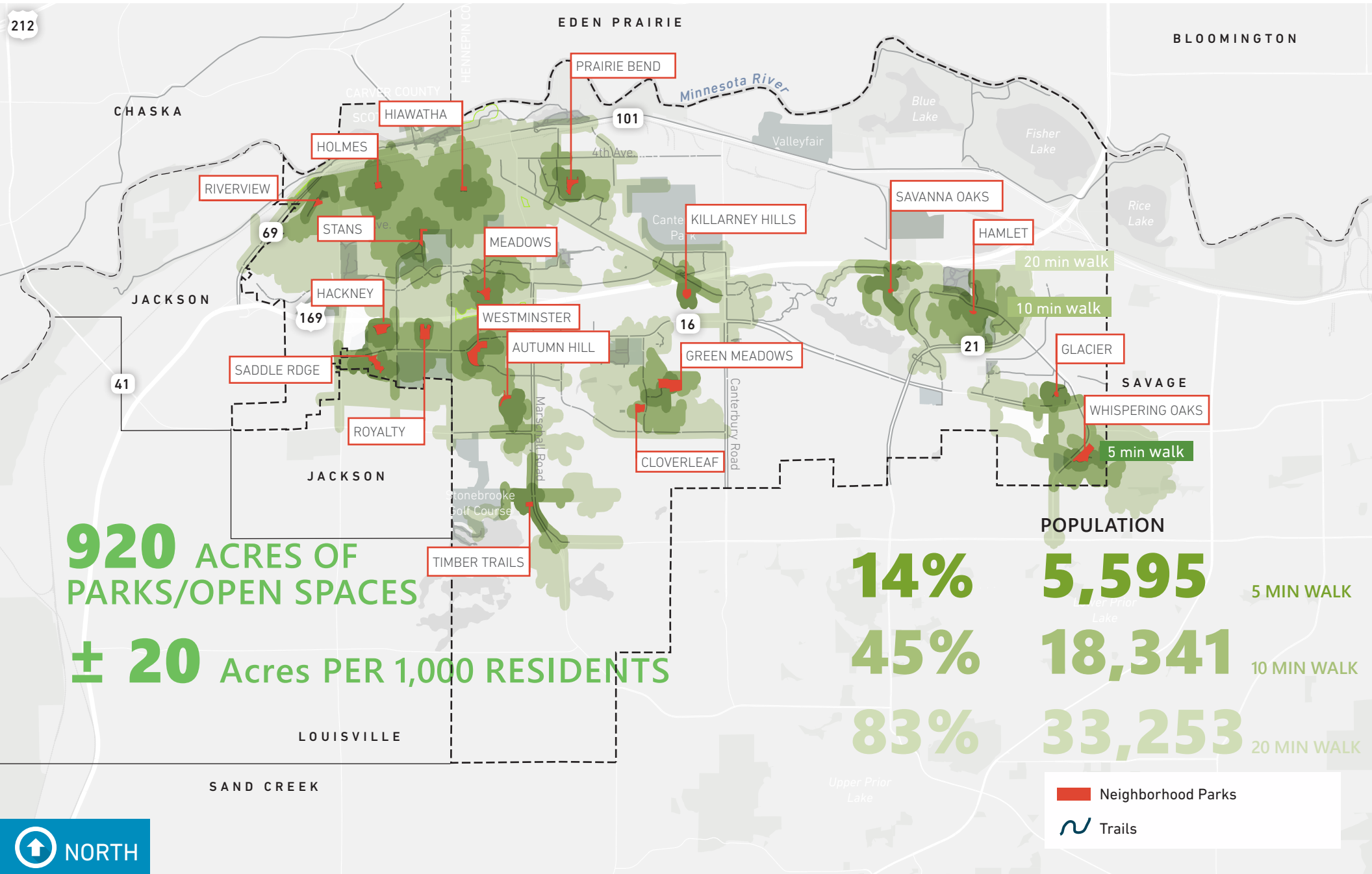
- School or Community Center
- ~ Trails



Note: Walksheds do not align with school transportation policies as younger students are bused if there is a major road.

SHAKOPEE TODAY

NEIGHBORHOOD PARKS WALKSHED



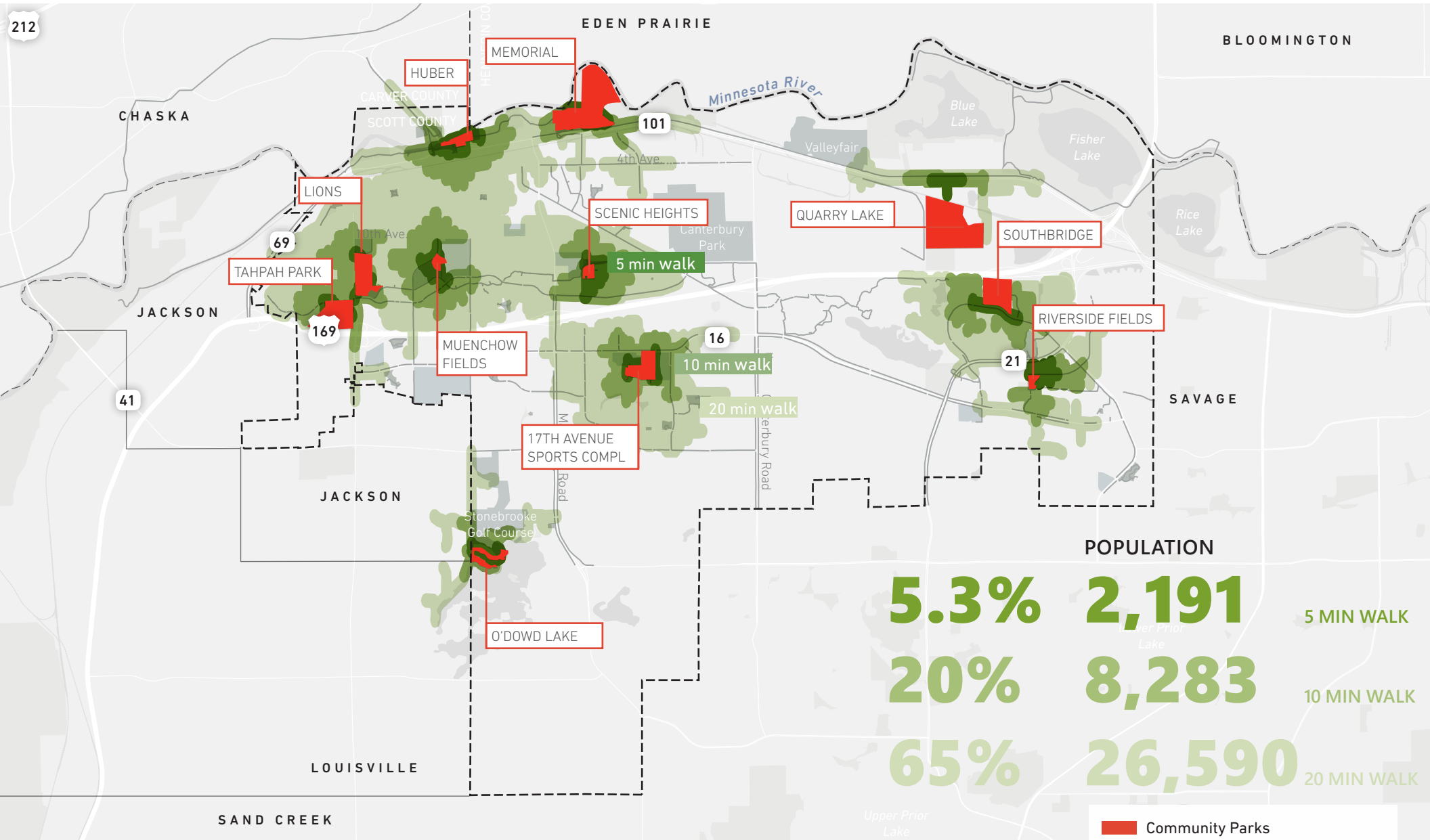
920 ACRES OF PARKS/OPEN SPACES
± 20 Acres PER 1,000 RESIDENTS

POPULATION	WALKSHED
14%	5,595 5 MIN WALK
45%	18,341 10 MIN WALK
83%	33,253 20 MIN WALK

- Neighborhood Parks
- ~ Trails

SHAKOPEE TODAY

COMMUNITY PARKS WALKSHED



POPULATION

5.3%	2,191	5 MIN WALK
20%	8,283	10 MIN WALK
65%	26,590	20 MIN WALK

- Community Parks
- ~ Trails





WORKSHOP STATIONS & QUESTIONS

WORKSHOP

- » Residents & Housing
- » Industries & Employment
- » Assets & Amenities
- » Transportation & Mobility

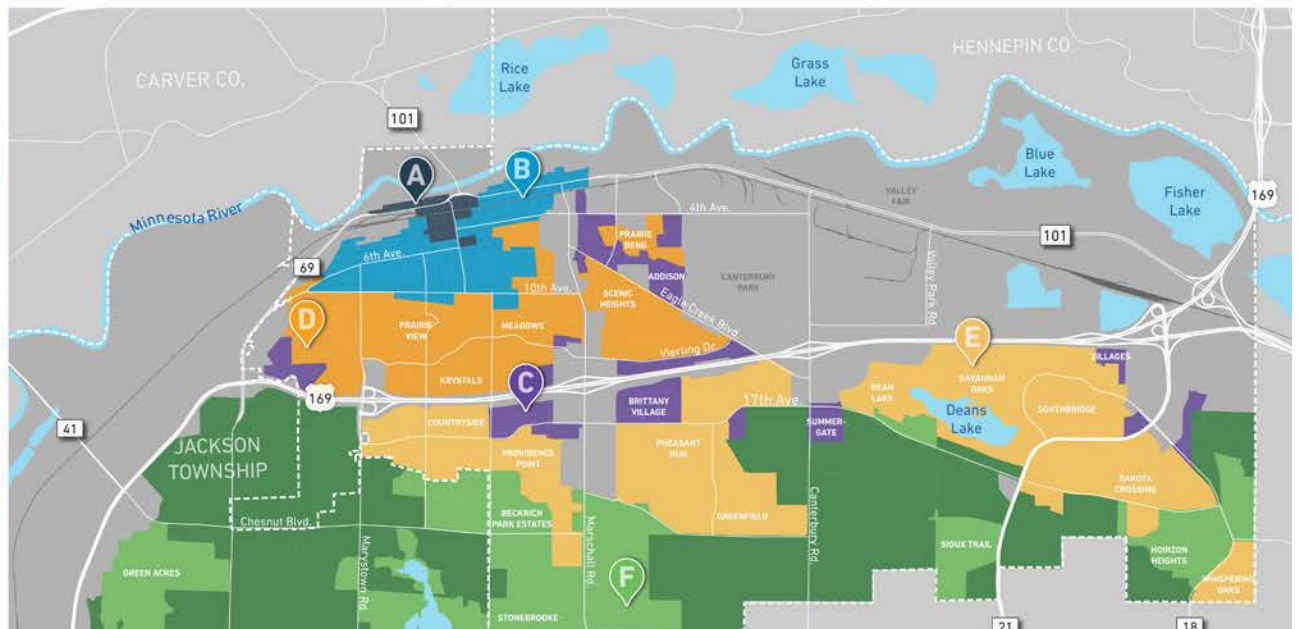
STATION 1: RESIDENTS & HOUSING



What types of housing are missing in Shakopee?

What would improve residents' quality of life in existing neighborhoods?

Where should new housing growth go?



WORKSHOP

- » What is your vision of Shakopee in 2040?
 - Looking into the future. By 2040, what has changed in Shakopee? What aspects of the community have been improved?
 - Describe the quality of life in Shakopee in 2040.
 - What are the issues and opportunities that need to be addressed to achieve this vision?
 - What aspects of Shakopee need to be preserved and enhanced as the City continues to grow and change?



Participate

Home > Participate

This plan depends on you

This planning process is designed to inspire all who live, work, play and learn in the city of Shakopee to take part in defining a clear vision for the future of our city. Your ideas and thoughts are critical to the success of the plan. Get involved today!

THURSDAY! COMMUNITY VISIONING WORKSHOP
SHAKOPEE

YOU ARE INVITED TO THE COMMUNITY VISIONING WORKSHOP!

QUICK Q&S: WHAT DO YOU LOVE? ... WHAT COULD BE BETTER?

BECOME A PLAN CHAMPION

FIND US AT COMMUNITY EVENTS

SIGN UP FOR PROJECT UPDATES

PROJECT UPDATES

This Thursday! Community Visioning Workshop

You are invited to the Community Visioning Workshop!

Become a Plan Champion

Subscribe to our mailing list

Email Address

First Name

Last Name

Sign Me Up For:

Envision Shakopee News

THANK YOU!

VISIT ENVISIONSHAKOPEE.COM